



JUNE 1999

6224.0

LABOUR FORCE STATUS AND OTHER CHARACTERISTICS OF FAMILIES

AUSTRALIA

EMBARGO: 11:30AM (CANBERRA TIME) MON 11 OCT 1999

C O N T E N T S

	<i>page</i>
Notes	2
Summary of Findings	3

TABLES

List of tables	9
Overview	10
All families	12
Couple families	18
One parent families	24
Relationship in household	26

ADDITIONAL INFORMATION

Explanatory Notes	32
Technical Notes	38
Glossary	42

- For further information about these and related statistics, contact Rosemary White on Canberra 02 6252 6525, or Client Services in any ABS Office as shown on the back cover of this publication.

NOTES

ABOUT THIS PUBLICATION

This publication presents information about the labour force status of persons in June 1999, and the types of families to which they belonged. Information is also provided on the number and age of children in families.

Family data were collected for civilians aged 15 and over who were usual residents of private dwellings where all the usual residents were present and within the scope of the survey. Certain classes of families were excluded (see paragraphs 5, 9 and 10 of the Explanatory Notes for more details). The estimates in this publication covered 95% of the Australian civilian population aged 15 and over.

ABOUT THIS SURVEY

The information in this publication was collected as part of the monthly Labour Force Survey conducted in June 1999. Family type has been derived from questions which establish the relationships between members of the households selected in the survey.

Relationship in household and families data are collected each month in the Labour Force Survey and published in *Labour Force, Australia* (Cat. no. 6203.0). However, it is only the June survey each year that provides estimates of children aged 0–4, 5–9 and 10–14 in families.

SYMBOLS AND OTHER USAGES

ABS	Australian Bureau of Statistics
LFS	Labour Force Survey
RSE	relative standard error
*	subject to sampling variability too high for most practical uses (see the Technical Notes for more information)
. .	not applicable

Where estimates have been rounded, discrepancies may occur between sums of the component items and totals.

REGIONAL INQUIRIES

For further inquiries about labour force data, contact Labour Force Inquiries in Regional ABS offices: Sydney 02 9268 4493, Melbourne 03 9615 7677, Brisbane 07 3222 6351, Perth 08 9360 5380, Adelaide 08 8237 7365, Hobart 03 6220 5841, Darwin 08 8943 2150, or Canberra 02 6207 0283.

W. McLennan
Australian Statistician

SUMMARY OF FINDINGS

OVERVIEW

The data in this publication are based on responses from people included in the June 1999 Labour Force Survey for whom family type could be derived (see paragraphs 9 and 10 of the Explanatory Notes for more details).

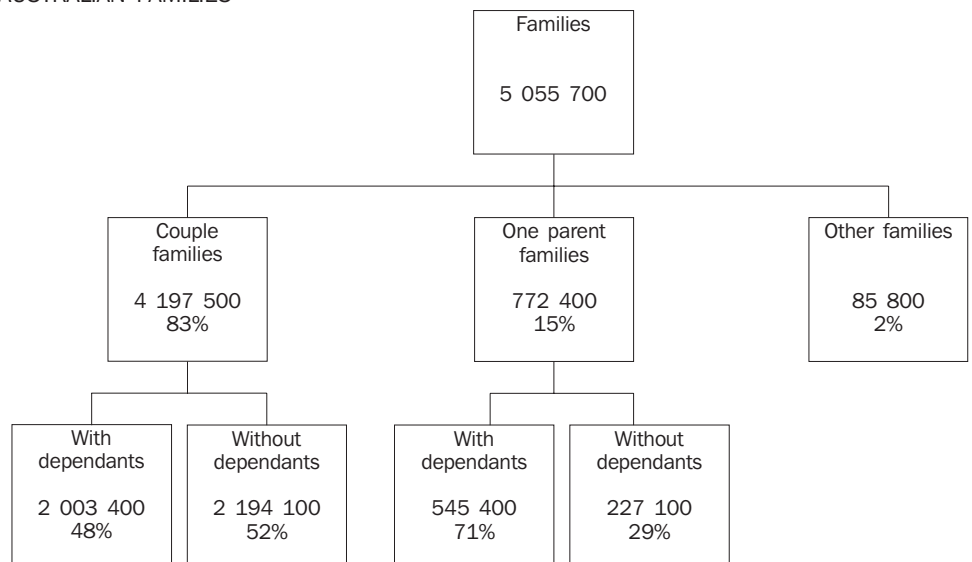
The data cover 14,176,000 people or 95% of the civilian population aged 15 and over. Of these people, 11,679,400 (82%) were members of 5,055,700 families. Of the remaining 2,496,600 people, i.e. those who were not members of a family, 64% lived alone.

As shown in the diagram below, the large majority of families were couple families, slightly less than half of which had dependants present.

One parent families were the next largest group, with more than two thirds having dependants present. Of the 772,400 one parent families, 86% had a female parent.

Of all families, 76% had one or more family members aged 15 and over employed, and 8.5% had one or more members unemployed. Approximately 55% of families had one or more persons aged 15 and over who were not in the labour force, and of these, 38% had all members not in the labour force.

AUSTRALIAN FAMILIES

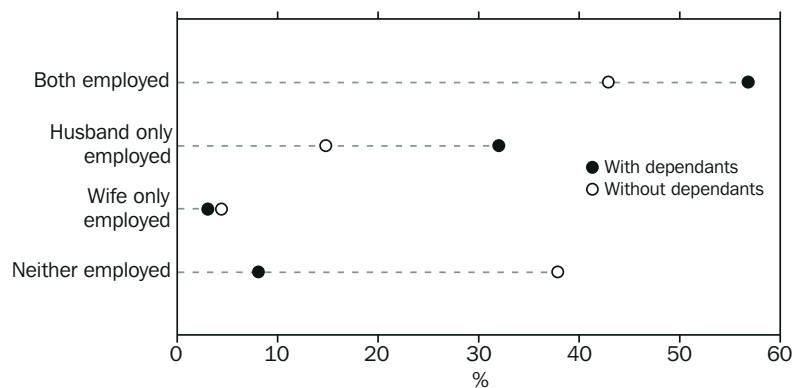


COUPLE FAMILIES

In June 1999, 76% of couple families had at least one partner employed. This proportion is unchanged for the past four years. The proportion in June 1989 was 78%. The decline since June 1989 has coincided with an increase in the proportion of couples where both partners are aged 45 and over, and both are not in the labour force.

The proportion of couple families with both partners employed has risen from 47% in June 1989 to 50% in June 1999. The percentage of couple families where one partner was employed and the other was not in the labour force has decreased from 29% in June 1989 to 24% in June 1999.

COUPLE FAMILIES: EMPLOYMENT STATUS OF PARTNER/S AND WHETHER DEPENDANTS PRESENT



COUPLE FAMILIES WITH DEPENDANTS PRESENT

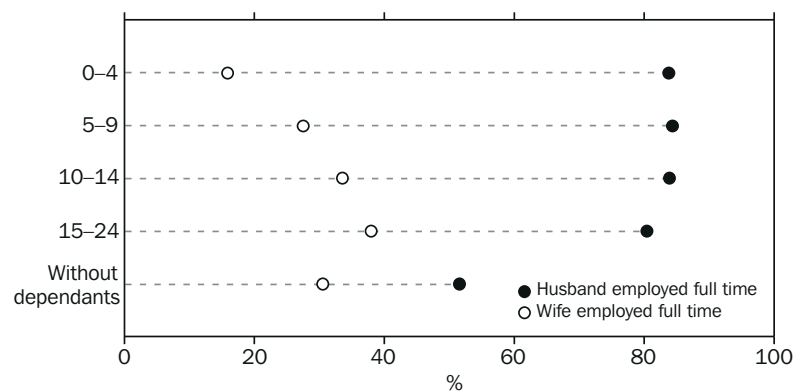
The proportion of couple families with dependants present in which one or both partners were employed was 92% in June 1999. It has increased from 89% in June 1989, although the rate of increase has slowed in the last few years.

The husband was employed in 89% of all couple families with dependants. This proportion has been steady in recent years. In 94% of these cases, the husband was employed full time.

The wife was employed in 60% of couple families with dependants. The proportion where the wife was employed full time has risen from 20% in the early 1980s to 26% in June 1999. The percentage of wives employed part time has been relatively steady at around 34% in recent years, after rising slowly from around 25% in the early 1980s.

The proportion of wives in full-time employment rose as the age of youngest dependant increased, as shown in the following graph.

COUPLE FAMILIES: FULL-TIME EMPLOYMENT STATUS OF PARENT BY AGE OF YOUNGEST DEPENDANT



In 3.2% of couple families with dependants present (64,400 families), the husband was unemployed and the wife was either unemployed or not in the labour force. In 45% of these families, the husband had been unemployed for 52 weeks or more.

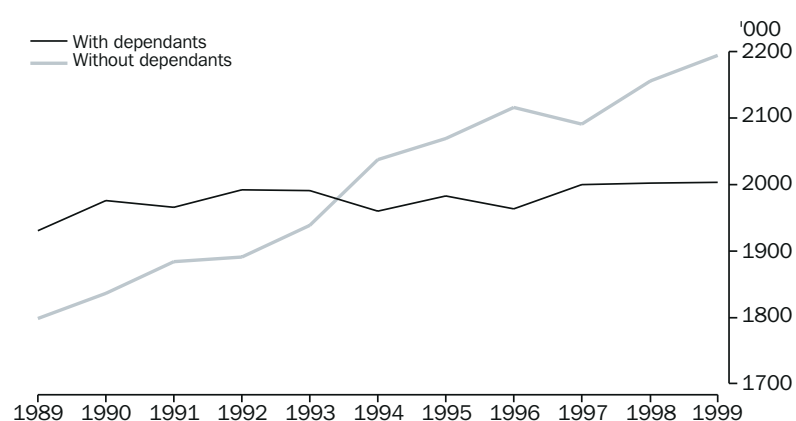
The percentage of couple families with dependants present with one or both parents unemployed has been steadily declining from 10.7% in June 1993 to 6.5% in June 1999. Since June 1998, the percentage with one or both parents unemployed has fallen 1.2 percentage points. The proportion of these families with one or both partners unemployed generally reflects changes in the overall level of unemployment.

The number of children aged 0-14 in couple families where neither parent was employed was 269,800 in June 1999.

COUPLE FAMILIES WITHOUT DEPENDANTS PRESENT

In June 1999, 52% of couple families had no dependants present. The proportion has been consistently greater than 50% since June 1994.

COUPLE FAMILIES



COUPLE FAMILIES WITHOUT
DEPENDANTS PRESENT
continued

The husband and wife were both aged 45 years or over in 73% of couple families without dependants present in June 1999, an increase from 71% in 1990. Of these, 49% were families where both partners were not in the labour force.

At least one partner was employed in 62% of couple families without dependants present and 43% had both partners employed. The husband was employed full time in 51% of couple families without dependants and the wife was employed full time in 31%.

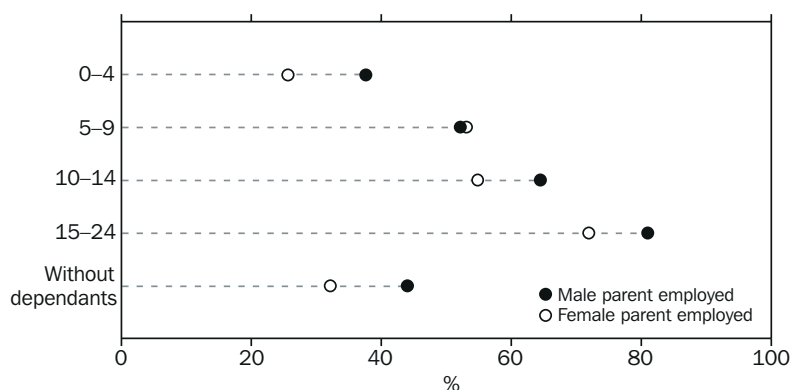
In these families, the proportion in which wives were employed part time has risen over the last five years, from 14% in June 1993 to 17% in June 1999, although it has remained steady in the last year.

Over time, the proportion where at least one partner was unemployed broadly reflects movements in the overall level of unemployment. In June 1999, this proportion was 3.4% for these families (compared with 6.5% for couple families with dependants present).

ONE PARENT FAMILIES

In June 1999, there were 772,400 one parent families, making up 15% of all families. This percentage has increased from 13% in June 1994.

ONE PARENT FAMILIES: EMPLOYMENT STATUS OF PARENT BY AGE
OF YOUNGEST DEPENDANT



The percentage of one parent families where the parent was not in the labour force has decreased to 48% in June 1999 from 51% in June 1994.

The parent was unemployed in 7.2% (55,400) of one parent families. In 16,500 or 30% of these families, the parent had been unemployed for 52 weeks or more.

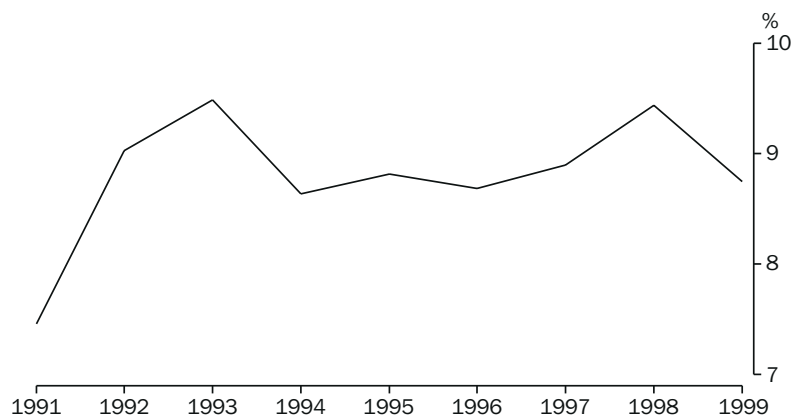
ONE PARENT FAMILIES WITH DEPENDANTS PRESENT

In June 1999, there were 545,400 one parent families with dependants present, 71% of all one parent families. Of these, 89% had a female parent. In 59% of one parent families with dependants the youngest child was aged 0–9 years.

The parent was employed in 49% of one parent families with dependants present in June 1999, an increase from 46% in June 1998. Of those families with a male head, the parent was employed in 63% of cases, compared with 47% of those with a female parent. The proportion with the parent employed generally increased as the age of the youngest dependant increased, with 74% of one parent families whose youngest dependant was aged 15–24 years having an employed parent, compared to 26% whose youngest dependant was aged 0–4.

The percentage of one parent families with dependants present where the parent was unemployed has decreased to 8.8% in June 1999. The proportion peaked at 9.5% in June 1993 before falling to 8.6% and remained relatively steadily for the next three years. It rose to 9.4% in June 1998 before falling again.

ONE PARENT FAMILIES WITH DEPENDANTS: PARENT UNEMPLOYED



The number of children aged 0–14 in one parent families where the parent was not employed fell by 6% over the last year, to 453,200 in June 1999. The level, however, remains nearly 30% higher than in June 1993.

PERSONS WHO WERE NOT MEMBERS OF A FAMILY

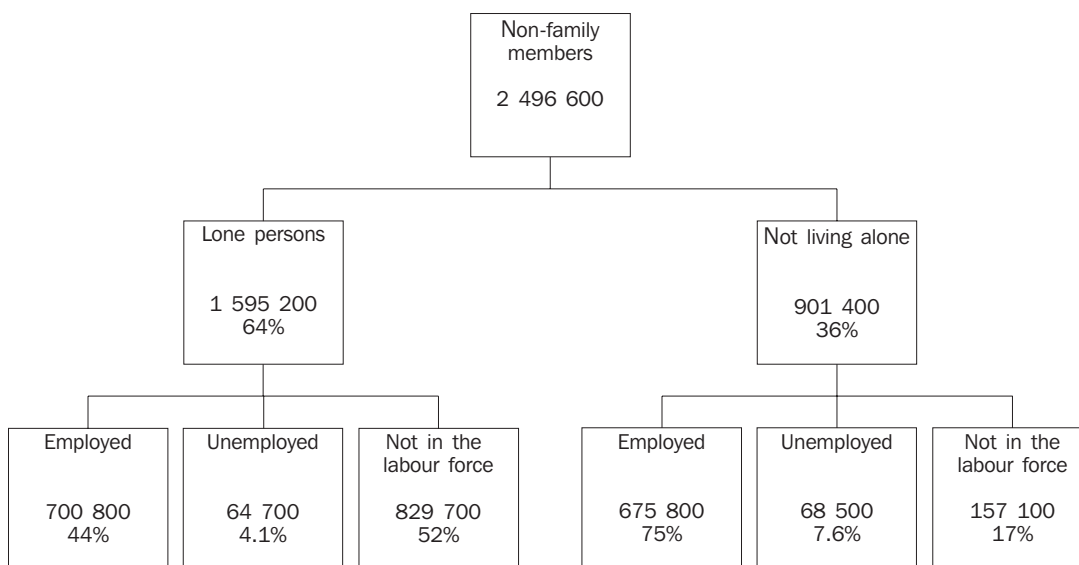
Persons living alone accounted for 11% (1,595,200) of the population where relationship in household was determined in June 1999. Some characteristics of these persons were:

- Approximately 55% were female, about two thirds of whom were aged 55 and over.
- Of the males living alone, 40% were aged 25–44, and 36% were aged 55 and over.
- 44% were employed. Some 58% of males living alone were employed and of females living alone, 32% were employed.
- 52% were not in the labour force, of whom 68% were female.

Selected characteristics of the 901,400 persons who were not members of a family and were *not living alone* (e.g. those in group houses) in June 1999 were:

- Some 57% were men.
- Compared with lone persons, those not living alone had a much younger age profile, with 73% aged younger than 35 (only 18% of lone persons were under 35). Men and women not living alone had similar age distributions.
- A large proportion (75%) were employed, with the proportion slightly lower for females than for males. The vast majority of employed males (85%) and employed females (75%) were working full time.
- 17% were not in the labour force.

LABOUR FORCE STATUS OF NON-FAMILY MEMBERS



LIST OF TABLES

Overview

1	Relationship in household and labour force status of persons aged 15 and over, June 1998 and June 1999	10
2	Relationship in household and labour force status of persons aged 15 and over, proportions, June 1998 and June 1999	11

All families

3	Family type, number of dependants and number of family members employed, June 1998 and June 1999	12
4	Family type, number and labour force status of family members	13
5	Number and labour force status of family members	14
6	Family type, number and age of dependants and labour force status of husband, wife or family head	15
7	Dependants: family type, total number and age of dependants and labour force status of husband, wife or family head	15
8	Family type, number of children aged under 5 years and labour force status of husband, wife or family head	16
9	Family type, number of children aged 5 to 9 years and labour force status of husband, wife or family head	16
10	Family type, number of children aged 10 to 14 years and labour force status of husband, wife or family head	17
11	Families with one or more members unemployed: family type, labour force status of family members and whether dependants present	17

Couple families

12	Labour force status of husband and wife and number of dependants	18
13	Labour force status of husband and wife and age of dependants	19
14	Labour force status of husband and wife and age of youngest dependant	20
15	Husband in the labour force: labour force status, age of wife and age of dependants	21
16	Wife in the labour force: labour force status, age of husband and age of dependants	22
17	Husband unemployed: duration of unemployment, and labour force status of wife	23
18	Wife unemployed: duration of unemployment, and labour force status of husband	23

One parent families

19	Labour force status of parent and age of dependants	24
20	Labour force status of parent and age of youngest dependant	24
21	Male parent: labour force status and age	25
22	Female parent: labour force status and age	25
23	Parent employed: full-time and part-time status and number of dependants	25
24	Parent unemployed: duration of unemployment	25

Relationship in household

25	Labour force status of persons aged 15 and over	26
26	Labour force status and age of persons aged 15 and over	27
27	Employed persons: full-time and part-time status and weekly hours worked	29
28	Unemployed persons: unemployment rates and distribution, June 1998 and June 1999	30
29	Unemployed persons: duration of unemployment	31

1. PERSONS: RELATIONSHIP IN HOUSEHOLD AND LABOUR FORCE STATUS OF PERSONS AGED 15 AND OVER
(**'000**)

	<i>Employed</i>		<i>Unemployed</i>		<i>Not in the labour force</i>		<i>Civilian population aged 15 and over</i>	
	<i>June 1998</i>	<i>June 1999</i>	<i>June 1998</i>	<i>June 1999</i>	<i>June 1998</i>	<i>June 1999</i>	<i>June 1998</i>	<i>June 1999</i>
MALES								
Family member	3,947.7	4,005.8	317.8	268.1	1,462.1	1,476.7	5,727.6	5,750.6
Husband	3,043.0	3,093.5	160.1	129.5	1,010.0	1,027.1	4,213.1	4,250.2
With dependants	1,810.4	1,817.5	103.7	85.9	134.6	147.2	2,048.7	2,050.5
Without dependants	1,232.6	1,276.0	56.3	43.7	875.4	879.9	2,164.4	2,199.6
Lone parent	61.6	59.6	7.2	7.1	44.6	42.2	113.4	109.0
With dependants	38.0	38.1	* 4.2	5.5	19.1	16.6	61.3	60.2
Without dependants	23.6	21.5	* 2.9	* 1.6	25.5	25.7	52.1	48.8
Dependent student(a)	158.6	167.8	29.9	30.5	266.1	267.6	454.6	465.9
Non-dependent child(b)	605.5	602.3	102.0	87.2	84.3	81.6	791.8	771.1
Other family person	79.0	82.5	18.6	13.8	57.1	58.1	154.7	154.4
Non-family member	758.1	811.4	92.6	84.5	324.6	342.7	1,175.3	1,238.5
Lone person	402.6	420.0	49.6	41.3	249.3	262.4	701.5	723.7
Not living alone	355.5	391.4	43.1	43.2	75.3	80.3	473.8	514.8
Total	4,705.8	4,817.1	410.4	352.6	1,786.7	1,819.4	6,902.9	6,989.1
Usual resident of a household where relationship was not determined	74.2	76.7	7.8	6.3	19.9	27.9	101.9	110.9
Total usual residents of private dwellings	4,780.0	4,893.9	418.2	358.9	1,806.6	1,847.3	7,004.9	7,100.1
Visitors to private dwellings	28.7	27.1	5.1	4.7	17.4	17.5	51.2	49.3
Persons enumerated in non-private dwellings	49.5	56.6	7.1	8.1	151.5	162.6	208.1	227.3
Total	4,858.2	4,977.6	430.4	371.7	1,975.5	2,027.4	7,264.1	7,376.8
FEMALES								
Family member	3,099.1	3,125.3	248.0	217.6	2,542.2	2,585.8	5,889.3	5,928.8
Wife	2,201.4	2,204.8	109.1	96.8	1,804.9	1,848.2	4,115.5	4,149.8
With dependants	1,199.0	1,183.7	65.8	60.1	719.5	733.0	1,984.4	1,976.7
Without dependants	1,002.4	1,021.2	43.3	36.7	1,085.4	1,115.2	2,131.1	2,173.1
Lone parent	277.4	282.6	53.3	48.2	338.9	327.6	669.7	658.3
With dependants	215.5	227.5	47.5	42.5	224.4	214.7	487.4	484.7
Without dependants	62.0	55.1	5.8	5.7	114.5	112.8	182.3	173.7
Dependent student(a)	200.1	207.5	33.5	31.0	243.2	238.7	476.8	477.2
Non-dependent child(b)	361.6	372.7	43.8	34.9	49.5	51.8	454.9	459.4
Other family person	58.5	57.7	8.3	6.7	105.6	119.7	172.4	184.1
Non-family member	526.2	565.3	44.1	48.7	608.2	644.1	1,178.5	1,258.0
Lone person	275.1	280.9	19.6	23.4	545.7	567.2	840.4	871.5
Not living alone	251.1	284.4	24.5	25.3	62.5	76.8	338.1	386.6
Total	3,625.3	3,690.6	292.1	266.4	3,150.4	3,229.9	7,067.8	7,186.8
Usual resident of a household where relationship was not determined	75.9	75.9	6.5	5.0	43.4	49.2	125.8	130.1
Total usual residents of private dwellings	3,701.2	3,766.5	298.6	271.3	3,193.8	3,279.1	7,193.6	7,316.9
Visitors to private dwellings	18.2	17.0	* 2.8	* 2.4	27.5	27.2	48.4	46.5
Persons enumerated in non-private dwellings	33.0	32.5	* 1.9	* 3.0	220.7	206.4	255.5	242.0
Total	3,752.3	3,816.0	303.2	276.7	3,441.9	3,512.7	7,497.5	7,605.4
PERSONS								
Family member	7,046.8	7,131.1	565.8	485.8	4,004.3	4,062.6	11,616.9	11,679.4
Husband or wife	5,244.4	5,298.4	269.2	226.3	2,814.9	2,875.3	8,328.6	8,400.0
With dependants	3,009.4	3,001.2	169.6	145.9	854.1	880.2	4,033.1	4,027.3
Without dependants	2,235.0	2,297.2	99.6	80.4	1,960.9	1,995.1	4,295.5	4,372.7
Lone parent	339.1	342.2	60.5	55.3	383.5	369.8	783.1	767.3
With dependants	253.4	265.6	51.7	48.0	243.5	231.3	548.7	544.9
Without dependants	85.6	76.6	8.8	7.3	140.0	138.5	234.4	222.4
Dependent student(a)	358.7	375.3	63.4	61.5	509.3	506.3	931.4	943.1
Non-dependent child(b)	967.1	975.0	145.8	122.1	133.8	133.4	1,246.8	1,230.5
Other family person	137.5	140.2	26.9	20.6	162.8	177.8	327.1	338.5
Non-family member	1,284.3	1,376.7	136.8	133.2	932.7	986.7	2,353.8	2,496.6
Lone person	677.7	700.8	69.2	64.7	795.0	829.7	1,541.8	1,595.2
Not living alone	606.6	675.8	67.6	68.5	137.7	157.1	811.9	901.4
Total	8,331.1	8,507.7	702.5	618.9	4,937.1	5,049.3	13,970.7	14,176.0
Usual resident of a household where relationship was not determined	150.1	152.7	14.3	11.3	63.3	77.1	227.7	241.0
Total usual residents of private dwellings	8,481.2	8,660.4	716.8	630.2	5,000.4	5,126.4	14,198.4	14,417.0
Visitors to private dwellings	46.9	44.1	7.9	7.1	44.8	44.7	99.6	95.8
Persons enumerated in non-private dwellings	82.4	89.1	9.0	11.1	372.2	369.0	463.6	469.3
Total	8,610.5	8,793.6	733.7	648.5	5,417.4	5,540.1	14,761.7	14,982.1

(a) Excludes persons aged 20 attending school. Also excludes sons or daughters aged 15-24 who are classified as husbands, wives or lone parents. (b) Aged 15 and over.

2. PERSONS: RELATIONSHIP IN HOUSEHOLD AND LABOUR FORCE STATUS OF PERSONS AGED 15 AND OVER(a)
(Per cent)

	<i>Employed</i>		<i>Unemployed</i>		<i>Not in the labour force</i>		<i>Civilian population aged 15 and over</i>	
	<i>June 1998</i>	<i>June 1999</i>	<i>June 1998</i>	<i>June 1999</i>	<i>June 1998</i>	<i>June 1999</i>	<i>June 1998</i>	<i>June 1999</i>
MALES								
Family member	83.9	83.2	77.4	76.0	81.8	81.2	83.0	82.3
Husband	64.7	64.2	39.0	36.7	56.5	56.5	61.0	60.8
With dependants	38.5	37.7	25.3	24.4	7.5	8.1	29.7	29.3
Without dependants	26.2	26.5	13.7	12.4	49.0	48.4	31.4	31.5
Lone parent	1.3	1.2	1.7	2.0	2.5	2.3	1.6	1.6
With dependants	0.8	0.8	* 1.0	1.6	1.1	0.9	0.9	0.9
Without dependants	0.5	0.4	* 0.7	* 0.5	1.4	1.4	0.8	0.7
Dependent student(b)	3.4	3.5	7.3	8.6	14.9	14.7	6.6	6.7
Non-dependent child(c)	12.9	12.5	24.9	24.7	4.7	4.5	11.5	11.0
Other family person	1.7	1.7	4.5	3.9	3.2	3.2	2.2	2.2
Non-family member	16.1	16.8	22.6	24.0	18.2	18.8	17.0	17.7
Lone person	8.6	8.7	12.1	11.7	14.0	14.4	10.2	10.4
Not living alone	7.6	8.1	10.5	12.2	4.2	4.4	6.9	7.4
Total	100.0	100.0	100.0	100.0	100.0	100.0	100.0	100.0
FEMALES								
Family member	85.5	84.7	84.9	81.7	80.7	80.1	83.3	82.5
Wife	60.7	59.7	37.4	36.3	57.3	57.2	58.2	57.7
With dependants	33.1	32.1	22.5	22.5	22.8	22.7	28.1	27.5
Without dependants	27.6	27.7	14.8	13.8	34.5	34.5	30.2	30.2
Lone parent	7.7	7.7	18.3	18.1	10.8	10.1	9.5	9.2
With dependants	5.9	6.2	16.3	15.9	7.1	6.6	6.9	6.7
Without dependants	1.7	1.5	2.0	2.1	3.6	3.5	2.6	2.4
Dependent student(b)	5.5	5.6	11.5	11.6	7.7	7.4	6.7	6.6
Non-dependent child(c)	10.0	10.1	15.0	13.1	1.6	1.6	6.4	6.4
Other family person	1.6	1.6	2.8	2.5	3.4	3.7	2.4	2.6
Non-family member	14.5	15.3	15.1	18.3	19.3	19.9	16.7	17.5
Lone person	7.6	7.6	6.7	8.8	17.3	17.6	11.9	12.1
Not living alone	6.9	7.7	8.4	9.5	2.0	2.4	4.8	5.4
Total	100.0	100.0	100.0	100.0	100.0	100.0	100.0	100.0
PERSONS								
Family member	84.6	83.8	80.5	78.5	81.1	80.5	83.2	82.4
Husband or wife	62.9	62.3	38.3	36.6	57.0	56.9	59.6	59.3
With dependants	36.1	35.3	24.1	23.6	17.3	17.4	28.9	28.4
Without dependants	26.8	27.0	14.2	13.0	39.7	39.5	30.7	30.8
Lone parent	4.1	4.0	8.6	8.9	7.8	7.3	5.6	5.4
With dependants	3.0	3.1	7.4	7.8	4.9	4.6	3.9	3.8
Without dependants	1.0	0.9	1.3	1.2	2.8	2.7	1.7	1.6
Dependent student(b)	4.3	4.4	9.0	9.9	10.3	10.0	6.7	6.7
Non-dependent child(c)	11.6	11.5	20.8	19.7	2.7	2.6	8.9	8.7
Other family person	1.7	1.6	3.8	3.3	3.3	3.5	2.3	2.4
Non-family member	15.4	16.2	19.5	21.5	18.9	19.5	16.8	17.6
Lone person	8.1	8.2	9.8	10.5	16.1	16.4	11.0	11.3
Not living alone	7.3	7.9	9.6	11.1	2.8	3.1	5.8	6.4
Total	100.0	100.0	100.0	100.0	100.0	100.0	100.0	100.0

(a) Civilians who were residents of households where family status was determined. For further details see paragraphs 9 and 10 of the Explanatory Notes. (b) Excludes persons aged 20 attending school. Also excludes sons or daughters aged 15-24 who are classified as husbands, wives or lone parents. (c) Aged 15 and over.

3. ALL FAMILIES: FAMILY TYPE, NUMBER OF DEPENDANTS AND NUMBER OF FAMILY MEMBERS EMPLOYED
(*000 families)

Number of dependants	None employed		One employed		Two or more employed		Total	
	June 1998	June 1999	June 1998	June 1999	June 1998	June 1999	June 1998	June 1999
COUPLE FAMILY								
None	732.6	743.8	397.5	403.1	1,025.7	1,047.2	2,155.8	2,194.1
One or more	147.1	138.2	605.6	620.0	1,249.5	1,245.2	2,002.2	2,003.4
One	51.9	44.6	183.7	188.2	452.0	426.0	687.7	658.8
Two	50.8	51.1	248.8	255.7	529.5	545.3	829.1	852.0
Three	23.0	25.9	123.7	129.0	210.9	212.6	357.5	367.6
Four or more	21.4	16.6	49.4	47.1	57.0	61.3	127.8	125.0
Total	879.7	882.1	1,003.1	1,023.1	2,275.2	2,292.4	4,158.0	4,197.5
ONE PARENT FAMILY WITH A MALE PARENT								
None	13.8	10.7	17.1	19.0	21.6	19.8	52.6	49.6
One	12.4	12.7	20.0	14.8	6.1	10.7	38.5	38.2
Two	7.5	5.4	8.0	9.4	* 1.9	* 1.9	17.3	16.7
Three or more	* 2.1	* 2.1	* 2.0	* 1.2	* 0.9	* 1.5	5.0	4.8
Total	35.9	31.0	47.0	44.4	30.5	33.9	113.4	109.3
ONE PARENT FAMILY WITH A FEMALE PARENT								
None	46.0	44.2	79.8	76.7	60.2	56.5	186.0	177.5
One	106.7	95.9	99.5	108.3	29.7	33.2	235.9	237.3
Two	84.6	81.1	69.9	68.6	16.6	14.8	171.2	164.5
Three	34.9	35.4	18.6	18.1	* 3.3	6.7	56.9	60.2
Four or more	18.0	15.8	5.3	6.8	* 0.7	* 1.0	24.0	23.6
Total	290.2	272.4	273.2	278.5	110.6	112.2	673.9	663.1
ONE PARENT FAMILY: TOTAL								
None	59.8	55.0	96.9	95.8	81.8	76.3	238.5	227.1
One	119.1	108.6	119.5	123.1	35.9	43.8	274.4	275.5
Two	92.1	86.5	77.9	78.0	18.5	16.8	188.5	181.2
Three	36.5	36.7	20.4	19.2	* 4.2	7.6	61.1	63.5
Four or more	18.5	16.6	5.6	7.0	* 0.7	* 1.6	24.8	25.2
Total	326.0	303.4	320.2	323.0	141.0	146.1	787.3	772.4
OTHER FAMILY								
None	25.2	26.2	22.1	24.3	34.2	35.3	81.5	85.8
Total	25.2	26.2	22.1	24.3	34.2	35.3	81.5	85.8
TOTAL								
None	817.6	825.0	516.5	523.2	1,141.8	1,158.8	2,475.8	2,507.0
One or more	413.3	386.6	828.9	847.2	1,308.7	1,314.9	2,550.9	2,548.7
One	171.0	153.2	303.2	311.3	487.9	469.8	962.1	934.3
Two	142.9	137.6	326.7	333.7	548.0	562.0	1,017.6	1,033.3
Three	59.5	62.6	144.1	148.2	215.1	220.2	418.6	431.0
Four or more	39.9	33.2	55.0	54.1	57.7	62.9	152.6	150.1
Total	1,230.9	1,211.6	1,345.4	1,370.4	2,450.5	2,473.7	5,026.8	5,055.7

4. ALL FAMILIES: FAMILY TYPE, NUMBER AND LABOUR FORCE STATUS(a) OF FAMILY MEMBERS, JUNE 1999
(^{'000 families})

Number of family members of any age	None employed			One employed			Two or more employed			Total		
	None unemp-loyed	One or more unemp-loyed	Total	None unemp-loyed	One or more unemp-loyed	Total	None unemp-loyed	One or more unemp-loyed	Total	None unemp-loyed	One or more unemp-loyed	Total
COUPLE FAMILY												
Two	680.6	20.5	701.2	279.9	33.3	313.2	718.3	..	718.3	1,678.9	53.8	1,732.7
Three	47.3	32.2	79.5	226.2	27.2	253.4	484.4	19.2	503.6	758.0	78.6	836.6
Four	28.4	25.4	53.9	232.0	34.6	266.6	638.6	34.4	673.0	899.0	94.4	993.5
Five	13.4	15.5	28.9	117.3	18.6	135.9	273.2	21.1	294.3	403.9	55.2	459.1
Six or more	8.8	9.8	18.5	45.7	8.3	53.9	92.1	11.1	103.1	146.5	29.1	175.6
<i>Total</i>	<i>778.6</i>	<i>103.5</i>	<i>882.1</i>	<i>901.1</i>	<i>122.0</i>	<i>1,023.1</i>	<i>2,206.6</i>	<i>85.8</i>	<i>2,292.4</i>	<i>3,886.3</i>	<i>311.2</i>	<i>4,197.5</i>
Average family size	2.2	3.7	2.4	3.4	3.5	3.4	3.3	4.3	3.4	3.1	3.8	3.2
ONE PARENT FAMILY WITH A MALE PARENT												
Two	14.7	5.4	20.0	25.7	5.3	31.0	15.8	..	15.8	56.2	10.7	66.9
Three or more	7.7	* 3.3	11.0	11.2	* 2.2	13.4	16.0	* 2.1	18.0	34.8	7.6	42.4
<i>Total</i>	<i>22.3</i>	<i>8.7</i>	<i>31.0</i>	<i>36.9</i>	<i>7.5</i>	<i>44.4</i>	<i>31.8</i>	<i>* 2.1</i>	<i>33.9</i>	<i>91.0</i>	<i>18.3</i>	<i>109.3</i>
Average family size	2.5	2.5	2.5	2.4	2.3	2.4	2.6	3.6	2.7	2.5	2.5	2.5
ONE PARENT FAMILY WITH A FEMALE PARENT												
Two	99.2	26.8	126.0	146.4	13.0	159.4	44.5	..	44.5	290.1	39.8	329.9
Three	69.6	19.0	88.7	74.2	11.6	85.8	43.1	* 3.9	47.0	186.9	34.6	221.5
Four	32.4	5.1	37.5	20.8	* 3.4	24.2	14.0	* 2.2	16.2	67.3	10.6	77.9
Five or more	17.2	* 3.0	20.2	7.9	* 1.2	9.1	* 3.8	* 0.8	4.6	28.9	4.9	33.9
<i>Total</i>	<i>218.5</i>	<i>53.9</i>	<i>272.4</i>	<i>249.4</i>	<i>29.1</i>	<i>278.5</i>	<i>105.3</i>	<i>6.9</i>	<i>112.2</i>	<i>573.2</i>	<i>89.9</i>	<i>663.1</i>
Average family size	2.9	2.8	2.8	2.6	2.8	2.6	2.8	3.6	2.9	2.7	2.8	2.7
ONE PARENT FAMILY: TOTAL												
Two	113.9	32.2	146.1	172.1	18.3	190.4	60.3	..	60.3	346.3	50.5	396.8
Three	75.1	21.9	97.0	82.9	13.5	96.4	55.5	5.7	61.2	213.5	41.1	254.6
Four	34.3	5.1	39.3	23.1	* 3.7	26.8	17.3	* 2.2	19.4	74.7	10.9	85.6
Five or more	17.6	* 3.4	21.0	8.1	* 1.2	9.3	* 4.0	* 1.1	5.2	29.7	5.7	35.4
<i>Total</i>	<i>240.8</i>	<i>62.5</i>	<i>303.4</i>	<i>286.3</i>	<i>36.7</i>	<i>323.0</i>	<i>137.1</i>	<i>9.0</i>	<i>146.1</i>	<i>664.2</i>	<i>108.2</i>	<i>772.4</i>
Average family size	2.8	2.7	2.8	2.5	2.7	2.6	2.8	3.6	2.8	2.7	2.8	2.7
OTHER FAMILY												
Two	20.5	* 3.8	24.4	16.1	6.8	22.8	31.5	..	31.5	68.1	10.6	78.7
Three or more	* 1.5	* 0.3	* 1.8	* 0.6	* 0.9	* 1.5	* 3.8	* 0.0	* 3.8	5.9	* 1.2	7.1
<i>Total</i>	<i>22.0</i>	<i>* 4.1</i>	<i>26.2</i>	<i>16.7</i>	<i>7.6</i>	<i>24.3</i>	<i>35.3</i>	<i>* 0.0</i>	<i>35.3</i>	<i>74.0</i>	<i>11.8</i>	<i>85.8</i>
Average family size	2.1	2.1	2.1	2.0	2.1	2.1	2.1	* 0.0	2.1	2.1	2.1	2.1
TOTAL												
Two	815.1	56.5	871.6	468.1	58.3	526.5	810.1	..	810.1	2,093.3	114.8	2,208.2
Three	123.9	54.4	178.4	309.7	41.7	351.3	543.4	24.9	568.3	977.0	121.0	1,098.0
Four	62.7	30.5	93.2	255.2	38.3	293.5	655.9	36.5	692.4	973.7	105.3	1,079.1
Five	27.8	17.7	45.4	124.4	19.4	143.8	275.9	21.6	297.5	428.1	58.6	486.7
Six or more	12.0	11.0	23.0	46.6	8.7	55.3	93.7	11.7	105.5	152.4	31.4	183.8
Total	1,041.5	170.1	1,211.6	1,204.1	166.3	1,370.4	2,379.0	94.8	2,473.7	4,624.5	431.2	5,055.7
Average family size	2.4	3.3	2.5	3.2	3.3	3.2	3.3	4.3	3.3	3.1	3.5	3.1

(a) Labour force status relates to persons aged 15 and over only.

5. ALL FAMILIES: NUMBER AND LABOUR FORCE STATUS(a) OF FAMILY MEMBERS, JUNE 1999
(^{'000 families})

Number of family members of any age	None employed			One employed			Two or more employed			Total		
	None unemployed	One or more unemployed	Total	None unemployed	One or more unemployed	Total	None unemployed	One or more unemployed	Total	None unemployed	One or more unemployed	Total
FAMILIES WITH ALL MEMBERS IN THE LABOUR FORCE												
Two	..	26.4	26.4	82.3	58.3	140.6	810.1	..	810.1	892.4	84.7	977.1
Three	..	19.1	19.1	52.2	23.1	75.2	403.2	24.9	428.1	455.3	67.1	522.4
Four	..	7.3	7.3	10.4	22.2	32.5	460.5	26.4	486.9	470.9	55.9	526.8
Five	..	* 1.7	* 1.7	* 3.7	9.7	13.4	177.4	11.2	188.6	181.0	22.6	203.6
Six or more	..	* 0.6	* 0.6	* 0.4	* 2.3	* 2.7	49.8	* 4.3	54.1	50.2	7.2	57.3
Total	..	55.1	55.1	148.8	115.6	264.4	1,900.9	66.8	1,967.7	2,049.8	237.5	2,287.3
Average family size	..	2.7	2.7	2.6	2.9	2.7	3.1	3.9	3.1	3.0	3.2	3.1
FAMILIES WITH ONE MEMBER NOT IN THE LABOUR FORCE												
Two	70.5	30.1	100.6	385.9	..	385.9	456.4	30.1	486.5
Three	55.1	17.9	73.0	162.8	18.6	181.4	140.2	..	140.2	358.1	36.5	394.6
Four	23.8	17.1	40.9	210.5	9.0	219.5	150.9	10.1	161.0	385.3	36.3	421.5
Five	8.7	12.1	20.8	101.9	5.1	107.0	72.4	7.4	79.8	183.0	24.5	207.5
Six or more	* 1.9	5.3	7.2	29.3	* 2.9	32.2	26.5	* 4.2	30.7	57.7	12.4	70.1
Total	160.1	82.5	242.6	890.4	35.6	925.9	390.0	21.7	411.7	1,440.4	139.8	1,580.2
Average family size	2.9	3.4	3.0	3.1	3.8	3.2	4.0	4.8	4.0	3.3	3.7	3.4
FAMILIES WITH TWO OR MORE MEMBERS NOT IN THE LABOUR FORCE												
Two	744.5	..	744.5	744.5	..	744.5
Three	68.8	17.4	86.2	94.8	..	94.8	163.6	17.4	181.0
Four	38.9	6.1	45.0	34.3	7.1	41.4	44.4	..	44.4	117.6	13.2	130.8
Five	19.1	* 3.9	23.0	18.8	4.5	23.4	26.1	* 3.1	29.2	64.0	11.5	75.5
Six or more	10.1	5.1	15.2	17.0	* 3.6	20.5	17.5	* 3.2	20.7	44.5	11.8	56.3
Total	881.4	32.5	913.9	164.9	15.2	180.0	88.0	6.2	94.2	1,134.3	53.9	1,188.1
Average family size	2.3	3.9	2.3	3.8	4.9	3.9	4.8	5.9	4.9	2.7	4.5	2.8
TOTAL												
Two	815.1	56.5	871.6	468.1	58.3	526.5	810.1	..	810.1	2,093.3	114.8	2,208.2
Three	123.9	54.4	178.4	309.7	41.7	351.3	543.4	24.9	568.3	977.0	121.0	1,098.0
Four	62.7	30.5	93.2	255.2	38.3	293.5	655.9	36.5	692.4	973.7	105.3	1,079.1
Five	27.8	17.7	45.4	124.4	19.4	143.8	275.9	21.6	297.5	428.1	58.6	486.7
Six or more	12.0	11.0	23.0	46.6	8.7	55.3	93.7	11.7	105.5	152.4	31.4	183.8
Total	1,041.5	170.1	1,211.6	1,204.1	166.3	1,370.4	2,379.0	94.8	2,473.7	4,624.5	431.2	5,055.7
Average family size	2.4	3.3	2.5	3.2	3.3	3.2	3.3	4.3	3.3	3.1	3.5	3.1

(a) Labour force status refers to persons aged 15 and over only.

6. ALL FAMILIES: FAMILY TYPE, NUMBER AND AGE OF DEPENDANTS AND LABOUR FORCE STATUS OF HUSBAND, WIFE OR FAMILY HEAD, JUNE 1999
(*000 families)

	<i>No dependent students</i>				<i>Some dependent students</i>				
	<i>Number of children under 15 years</i>				<i>Number of children under 15 years</i>				
	<i>None</i>	<i>One</i>	<i>Two or more</i>	<i>Total</i>	<i>None</i>	<i>One</i>	<i>Two or more</i>	<i>Total</i>	<i>Total</i>
Couple family	2,194.1	451.5	955.4	3,601.0	295.7	190.2	110.5	596.5	4,197.5
One or both spouses unemployed(a)	73.9	30.7	68.4	173.0	12.9	9.7	8.2	30.8	203.7
Husband employed, wife unemployed	25.3	9.6	22.0	56.9	5.7	4.4	* 2.6	12.8	69.7
Husband unemployed, wife employed	17.2	5.3	8.1	30.5	* 1.8	* 2.2	* 0.8	4.8	35.3
Husband unemployed, wife unemployed	8.0	4.5	5.6	18.1	* 1.9	* 0.4	* 0.8	* 3.0	21.1
Husband unemployed, wife not in the labour force	18.7	11.1	30.9	60.7	* 3.1	* 2.7	* 3.5	9.2	69.9
Neither spouse unemployed	2,120.3	420.7	887.1	3,428.1	282.9	180.5	102.3	565.7	3,993.7
Husband employed, wife employed	941.1	245.3	500.9	1,687.2	199.7	133.6	58.1	391.4	2,078.6
Husband employed, wife not in the labour force	298.6	142.4	332.6	773.6	51.5	35.5	33.9	120.8	894.4
Husband not in the labour force, wife employed	80.4	13.8	16.5	110.7	9.2	* 3.7	* 1.8	14.7	125.3
Husband not in the labour force, wife not in the labour force	800.3	19.3	37.1	856.6	22.4	7.8	8.5	38.8	895.3
One parent family	227.1	205.2	189.3	621.6	87.3	39.0	24.5	150.8	772.4
Parent unemployed	7.6	20.3	17.7	45.6	5.8	* 2.6	* 1.3	9.7	55.4
Male parent unemployed	* 1.6	* 2.6	* 1.6	5.8	* 1.3	* 0.0	* 0.0	* 1.3	7.0
Female parent unemployed	6.0	17.7	16.1	39.8	4.5	* 2.6	* 1.3	8.5	48.3
Parent not unemployed	219.5	184.9	171.6	576.0	81.5	36.4	23.2	141.1	717.1
Male parent employed	21.8	10.2	6.6	38.5	15.7	* 3.8	* 1.5	21.0	59.5
Female parent employed	56.9	87.6	64.9	209.4	48.8	17.8	9.2	75.9	285.3
Male parent not in the labour force	26.2	7.6	4.8	38.6	* 2.4	* 1.2	* 0.5	* 4.1	42.7
Female parent not in the labour force	114.5	79.6	95.3	289.4	14.6	13.6	12.0	40.1	329.6
Other family	85.8	85.8	85.8
Family head unemployed	* 3.9	* 3.9	* 3.9
Family head not unemployed	81.8	81.8	81.8
Family head employed	44.3	44.3	44.3
Family head not in the labour force	37.5	37.5	37.5
Total	2,507.0	656.6	1,144.8	4,308.4	383.0	229.2	135.1	747.3	5,055.7

(a) Includes a small number of families with husband not in the labour force and wife unemployed.

7. DEPENDANTS: FAMILY TYPE, TOTAL NUMBER AND AGE OF DEPENDANTS, AND LABOUR FORCE STATUS OF HUSBAND, WIFE OR FAMILY HEAD, JUNE 1999
(*000 dependants)

	<i>Children under 15 years</i>				<i>Dependent students</i>	<i>Total all dependants</i>
	<i>0-4 years</i>	<i>5-9 years</i>	<i>10-14 years</i>	<i>Total</i>		
Couple family	1,063.6	1,118.2	1,052.6	3,234.3	761.0	3,995.4
One or both spouses unemployed(a)	79.6	86.1	70.6	236.3	38.0	274.2
Husband employed, wife unemployed	22.9	28.0	24.4	75.3	16.4	91.6
Husband unemployed, wife employed	6.8	13.9	8.6	29.3	5.9	35.1
Husband unemployed, wife unemployed	9.2	7.4	* 3.7	20.2	* 3.4	23.6
Husband unemployed, wife not in the labour force	40.1	33.7	30.9	104.7	11.2	115.9
Neither spouse unemployed	984.0	1,032.1	982.0	2,998.1	723.1	3,721.1
Husband employed, wife employed	436.5	613.9	647.1	1,697.5	507.1	2,204.5
Husband employed, wife not in the labour force	485.3	348.2	262.6	1,096.1	152.6	1,248.7
Husband not in the labour force, wife employed	17.9	20.6	21.1	59.6	16.9	76.5
Husband not in the labour force, wife not in the labour force	44.3	49.4	51.2	144.9	46.5	191.4
One parent family	215.8	260.9	281.5	758.3	178.1	936.4
Parent unemployed	21.1	22.4	22.5	66.0	11.2	77.3
Male parent unemployed	* 1.9	* 2.0	* 2.7	6.6	* 1.3	7.9
Female parent unemployed	19.2	20.3	19.8	59.4	10.0	69.3
Parent not unemployed	194.7	238.5	259.0	692.2	166.9	859.1
Male parent employed	4.4	9.8	17.0	31.1	22.9	54.0
Female parent employed	46.9	104.5	122.5	273.9	90.0	363.9
Male parent not in the labour force	4.5	7.4	9.3	21.3	4.7	26.0
Female parent not in the labour force	138.9	116.8	110.3	366.0	49.2	415.2
Total	1,279.4	1,379.1	1,334.1	3,992.6	939.2	4,931.7

(a) Includes a small number of families with husband not in the labour force and wife unemployed.

8. ALL FAMILIES: FAMILY TYPE, NUMBER OF CHILDREN AGED UNDER 5 YEARS AND LABOUR FORCE STATUS OF HUSBAND, WIFE OR FAMILY HEAD, JUNE 1999
(*000 families)

	<i>Number of children aged 0-4</i>			<i>Total</i>
	<i>None</i>	<i>One</i>	<i>Two or more</i>	
Couple family	3,392.6	568.2	236.7	4,197.5
One or both spouses unemployed(a)	142.2	44.3	17.2	203.7
Husband employed, wife unemployed	51.5	13.9	4.4	69.7
Husband unemployed, wife employed	29.4	4.9	* 0.9	35.3
Husband unemployed, wife unemployed	13.7	5.7	* 1.7	21.1
Husband unemployed, wife not in the labour force	40.5	19.4	10.0	69.9
Neither spouse unemployed	3,250.4	523.8	219.5	3,993.7
Husband employed, wife employed	1,727.9	270.0	80.7	2,078.6
Husband employed, wife not in the labour force	549.2	220.1	125.2	894.4
Husband not in the labour force, wife employed	110.7	11.4	* 3.2	125.3
Husband not in the labour force, wife not in the labour force	862.7	22.3	10.4	895.3
One parent family	602.2	131.0	39.1	772.4
Parent unemployed	38.1	14.1	* 3.2	55.4
Male parent unemployed	5.6	* 1.2	* 0.2	7.0
Female parent unemployed	32.4	12.9	* 3.0	48.3
Parent not unemployed	564.2	117.0	35.9	717.1
Male parent employed	56.0	* 2.7	* 0.8	59.5
Female parent employed	244.1	35.4	5.7	285.3
Male parent not in the labour force	38.3	* 4.2	* 0.2	42.7
Female parent not in the labour force	225.7	74.6	29.2	329.6
Other family	85.8	85.8
Family head unemployed	* 3.9	* 3.9
Family head not unemployed	81.8	81.8
Family head employed	44.3	44.3
Family head not in the labour force	37.5	37.5
Total	4,080.6	699.2	275.9	5,055.7

(a) Includes a small number of families with husband not in the labour force and wife unemployed.

9. ALL FAMILIES: FAMILY TYPE, NUMBER OF CHILDREN AGED 5 TO 9 YEARS AND LABOUR FORCE STATUS OF HUSBAND, WIFE OR FAMILY HEAD, JUNE 1999
(*000 families)

	<i>Number of children aged 5-9</i>			<i>Total</i>
	<i>None</i>	<i>One</i>	<i>Two or more</i>	
Couple family	3,368.8	564.1	264.6	4,197.5
One or both spouses unemployed(a)	139.8	43.6	20.3	203.7
Husband employed, wife unemployed	49.4	13.2	7.0	69.7
Husband unemployed, wife employed	25.1	6.9	* 3.3	35.3
Husband unemployed, wife unemployed	15.4	* 4.0	* 1.7	21.1
Husband unemployed, wife not in the labour force	44.3	18.3	7.3	69.9
Neither spouse unemployed	3,229.0	520.5	244.3	3,993.7
Husband employed, wife employed	1,619.4	317.1	142.1	2,078.6
Husband employed, wife not in the labour force	641.3	166.2	86.9	894.4
Husband not in the labour force, wife employed	110.5	10.4	4.5	125.3
Husband not in the labour force, wife not in the labour force	857.7	26.7	10.9	895.3
One parent family	563.9	159.5	49.0	772.4
Parent unemployed	35.9	16.6	* 2.8	55.4
Male parent unemployed	5.6	* 0.9	* 0.6	7.0
Female parent unemployed	30.3	15.8	* 2.2	48.3
Parent not unemployed	528.0	142.9	46.2	717.1
Male parent employed	51.3	6.7	* 1.6	59.5
Female parent employed	200.1	67.1	18.1	285.3
Male parent not in the labour force	37.4	* 3.5	* 1.8	42.7
Female parent not in the labour force	239.2	65.6	24.7	329.6
Other family	85.8	85.8
Family head unemployed	* 3.9	* 3.9
Family head not unemployed	81.8	81.8
Family head employed	44.3	44.3
Family head not in the labour force	37.5	37.5
Total	4,018.5	723.6	313.6	5,055.7

(a) Includes a small number of families with husband not in the labour force and wife unemployed.

10. ALL FAMILIES: FAMILY TYPE, NUMBER OF CHILDREN AGED 10 TO 14 YEARS AND LABOUR FORCE STATUS OF HUSBAND, WIFE OR FAMILY HEAD, JUNE 1999
(*000 families)

	<i>Number of children aged 10-14</i>			<i>Total</i>
	<i>None</i>	<i>One</i>	<i>Two or more</i>	
Couple family	3,411.4	544.3	241.8	4,197.5
One or both spouses unemployed(a)	151.3	35.5	17.0	203.7
Husband employed, wife unemployed	51.1	13.3	5.3	69.7
Husband unemployed, wife employed	28.1	5.7	* 1.4	35.3
Husband unemployed, wife unemployed	18.3	* 2.2	* 0.7	21.1
Husband unemployed, wife not in the labour force	48.0	13.5	8.4	69.9
Neither spouse unemployed	3,260.1	508.8	224.9	3,993.7
Husband employed, wife employed	1,592.7	338.2	147.7	2,078.6
Husband employed, wife not in the labour force	703.4	127.8	63.2	894.4
Husband not in the labour force, wife employed	108.2	13.6	* 3.6	125.3
Husband not in the labour force, wife not in the labour force	855.7	29.3	10.3	895.3
One parent family	553.9	161.3	57.3	772.4
Parent unemployed	37.3	14.1	* 3.9	55.4
Male parent unemployed	4.9	* 1.6	* 0.5	7.0
Female parent unemployed	32.4	12.5	* 3.4	48.3
Parent not unemployed	516.6	147.1	53.3	717.1
Male parent employed	45.5	11.1	* 3.0	59.5
Female parent employed	187.9	73.0	24.4	285.3
Male parent not in the labour force	36.0	4.5	* 2.2	42.7
Female parent not in the labour force	247.1	58.6	23.9	329.6
Other family	85.8	85.8
Family head unemployed	* 3.9	* 3.9
Family head not unemployed	81.8	81.8
Family head employed	44.3	44.3
Family head not in the labour force	37.5	37.5
Total	4,051.0	705.6	299.1	5,055.7

(a) Includes a small number of families with husband not in the labour force and wife unemployed.

11. FAMILIES WITH ONE OR MORE MEMBERS UNEMPLOYED: FAMILY TYPE, LABOUR FORCE STATUS(a) OF FAMILY MEMBERS AND WHETHER DEPENDANTS PRESENT, JUNE 1999
(*000 families)

	<i>None employed</i>			<i>One employed</i>			<i>Two or more employed</i>			<i>Total</i>		
	<i>Two or more</i>		<i>Total</i>	<i>Two or more</i>		<i>Total</i>	<i>Two or more</i>		<i>Total</i>	<i>Two or more</i>		<i>Total</i>
	<i>One unemp-loyed</i>	<i>unemp-loyed</i>		<i>One unemp-loyed</i>	<i>unemp-loyed</i>		<i>One unemp-loyed</i>	<i>unemp-loyed</i>		<i>One unemp-loyed</i>	<i>unemp-loyed</i>	
Couple family	80.1	23.3	103.5	114.1	7.9	122.0	82.1	* 3.7	85.8	276.4	34.9	311.2
With dependants	51.5	14.4	65.9	67.7	5.9	73.5	52.6	* 1.1	53.7	171.8	21.4	193.2
Without dependants	28.6	8.9	37.5	46.5	* 2.0	48.5	29.5	* 2.6	32.1	104.6	13.5	118.1
One parent family	56.8	5.8	62.5	33.7	* 3.0	36.7	8.5	* 0.5	9.0	99.0	9.2	108.2
Other family	* 3.9	* 0.3	* 4.1	7.4	* 0.2	7.6	* 0.0	* 0.0	* 0.0	11.3	* 0.5	11.8
Total	140.7	29.4	170.1	155.2	11.0	166.3	90.6	* 4.1	94.8	386.6	44.6	431.2
With dependants	96.2	17.6	113.8	85.6	7.6	93.2	58.2	* 1.3	59.5	240.0	26.4	266.5
Without dependants	44.5	11.8	56.3	69.6	* 3.4	73.1	32.5	* 2.9	35.3	146.6	18.1	164.7

(a) Labour force status relates to persons aged 15 and over only.

12. COUPLE FAMILIES: LABOUR FORCE STATUS OF HUSBAND AND WIFE AND NUMBER OF DEPENDANTS, JUNE 1999
(**'000 families**)

Number of dependants	Wife employed			Wife unemployed	Wife in the labour force	Wife not in the labour force	Total
	Full time	Part time	Total				
HUSBAND EMPLOYED FULL TIME							
None	592.9	267.7	860.6	20.7	881.3	248.0	1,129.3
One or more	457.0	621.4	1,078.4	39.7	1,118.1	553.0	1,671.1
One	180.9	175.6	356.4	11.6	368.1	164.2	532.3
Two	194.5	291.2	485.8	18.0	503.8	226.5	730.3
Three	65.5	119.7	185.2	7.8	193.1	117.9	311.0
Four or more	16.1	34.9	51.0	* 2.2	53.1	44.4	97.5
Total	1,049.9	889.1	1,939.0	60.4	1,999.4	801.0	2,800.4
HUSBAND EMPLOYED: TOTAL							
None	626.8	314.3	941.1	25.3	966.4	298.6	1,265.0
One or more	484.0	653.6	1,137.6	44.4	1,181.9	595.9	1,777.8
One	191.0	187.9	378.9	13.2	392.0	180.7	572.7
Two	206.8	305.1	512.0	19.5	531.5	238.8	770.3
Three	69.0	125.4	194.4	8.5	202.9	128.0	330.9
Four or more	17.2	35.1	52.3	* 3.2	55.5	48.4	103.9
Total	1,110.8	967.9	2,078.6	69.7	2,148.3	894.4	3,042.8
HUSBAND UNEMPLOYED							
None	8.5	8.6	17.2	8.0	25.1	18.7	43.8
One or more	7.3	10.8	18.1	13.2	31.3	51.2	82.5
One	* 3.2	* 3.9	7.1	6.2	13.3	13.5	26.8
Two	* 3.1	* 3.6	6.6	4.7	11.3	19.7	31.1
Three	* 1.1	* 2.3	* 3.3	* 1.1	4.4	11.5	16.0
Four or more	* 0.0	* 1.1	* 1.1	* 1.1	* 2.2	6.5	8.7
Total	15.8	19.5	35.3	21.1	56.4	69.9	126.3
HUSBAND IN THE LABOUR FORCE							
None	635.3	323.0	958.2	33.3	991.5	317.3	1,308.8
One or more	491.3	664.4	1,155.7	57.5	1,213.2	647.1	1,860.3
One	194.1	191.8	385.9	19.4	405.4	194.2	599.5
Two	209.9	308.7	518.6	24.2	542.8	258.5	801.3
Three	70.1	127.7	197.7	9.6	207.4	139.5	346.9
Four or more	17.2	36.2	53.4	* 4.3	57.7	54.9	112.6
Total	1,126.5	987.3	2,113.9	90.8	2,204.7	964.4	3,169.1
HUSBAND NOT IN THE LABOUR FORCE							
None	34.9	45.5	80.4	4.7	85.1	800.3	885.3
One or more	21.3	23.7	45.0	* 3.0	48.0	95.1	143.0
One	11.4	10.4	21.8	* 0.6	22.4	36.9	59.3
Two	7.6	9.7	17.3	* 0.5	17.9	32.8	50.7
Three	* 1.1	* 3.0	* 4.1	* 0.9	5.1	15.6	20.7
Four or more	* 1.1	* 0.6	* 1.7	* 0.9	* 2.6	9.7	12.4
Total	56.2	69.2	125.3	7.7	133.0	895.3	1,028.4
TOTAL							
None	670.2	368.4	1,038.6	38.0	1,076.6	1,117.6	2,194.1
One or more	512.6	688.1	1,200.7	60.5	1,261.2	742.2	2,003.4
One	205.5	202.2	407.7	20.0	427.8	231.0	658.8
Two	217.5	318.4	536.0	24.7	560.7	291.4	852.0
Three	71.2	130.6	201.8	10.6	212.4	155.1	367.6
Four or more	18.3	36.8	55.1	5.2	60.3	64.7	125.0
Total	1,182.7	1,056.5	2,239.2	98.5	2,337.8	1,859.7	4,197.5

13. COUPLE FAMILIES: LABOUR FORCE STATUS OF HUSBAND AND WIFE AND AGE OF DEPENDANTS, JUNE 1999
(*000 families)

	<i>Wife employed</i>			<i>Wife unemp-loyed</i>	<i>Wife in the labour force</i>	<i>Wife not in the labour force</i>	
	<i>Full time</i>	<i>Part time</i>	<i>Total</i>				<i>Total</i>
HUSBAND EMPLOYED							
Families with dependants	484.0	653.6	1,137.6	44.4	1,181.9	595.9	1,777.8
Age of dependants							
0-9 only	152.7	273.7	426.3	18.9	445.2	340.5	785.7
0-4 only	67.6	114.9	182.4	8.3	190.8	192.5	383.3
5-9 only	50.4	72.7	123.1	4.6	127.7	41.8	169.4
0-4 and 5-9	34.7	86.1	120.8	6.0	126.8	106.2	233.0
10-14 only	60.7	72.5	133.2	* 3.9	137.1	40.5	177.6
15-24 only	106.4	93.3	199.7	5.7	205.5	51.5	257.0
0-9 and 10-14	70.3	114.9	185.2	8.8	193.9	93.3	287.2
0-4 and 10-14	6.0	10.6	16.6	* 1.0	17.6	14.2	31.8
5-9 and 10-14	59.7	88.1	147.8	5.8	153.6	57.4	211.0
0-4, 5-9 and 10-14	4.6	16.2	20.8	* 2.0	22.8	21.7	44.4
0-9 and 15-24	15.1	10.5	25.6	* 1.1	26.7	12.8	39.6
5-9 and 15-24	12.1	8.0	20.1	* 0.7	20.8	8.3	29.2
10-14 and 15-24	67.3	71.8	139.0	4.4	143.4	38.7	182.2
0-9, 10-14 and 15-24	11.6	17.0	28.5	* 1.6	30.1	18.5	48.6
5-9, 10-14 and 15-24	9.2	14.6	23.8	* 1.0	24.9	12.4	37.3
Families without dependants	626.8	314.3	941.1	25.3	966.4	298.6	1,265.0
Total	1,110.8	967.9	2,078.6	69.7	2,148.3	894.4	3,042.8
HUSBAND UNEMPLOYED							
Families with dependants	7.3	10.8	18.1	13.2	31.3	51.2	82.5
Families without dependants	8.5	8.6	17.2	8.0	25.1	18.7	43.8
Total	15.8	19.5	35.3	21.1	56.4	69.9	126.3
HUSBAND IN THE LABOUR FORCE							
Families with dependants	491.3	664.4	1,155.7	57.5	1,213.2	647.1	1,860.3
Age of dependants							
0-9 only	155.1	278.5	433.6	26.7	460.3	365.7	826.0
0-4 only	68.4	116.2	184.5	12.9	197.4	203.8	401.2
5-9 only	51.3	74.9	126.2	6.1	132.4	45.1	177.5
0-4 and 5-9	35.4	87.5	122.9	7.6	130.5	116.9	247.3
10-14 only	62.0	73.9	135.8	4.7	140.5	46.0	186.5
15-24 only	107.2	94.4	201.5	7.6	209.2	54.5	263.7
0-9 and 10-14	71.5	117.1	188.5	10.3	198.9	104.0	302.9
0-4 and 10-14	6.5	10.6	17.1	* 1.3	18.4	16.0	34.4
5-9 and 10-14	60.4	89.6	150.0	6.5	156.5	62.9	219.4
0-4, 5-9 and 10-14	4.6	16.9	21.4	* 2.5	24.0	25.1	49.0
0-9 and 15-24	16.5	11.0	27.5	* 1.8	29.2	13.9	43.1
5-9 and 15-24	13.2	8.3	21.5	* 1.4	22.8	9.1	32.0
10-14 and 15-24	67.6	72.0	139.6	4.4	144.0	41.6	185.6
0-9, 10-14 and 15-24	11.6	17.5	29.1	* 2.1	31.1	21.3	52.4
5-9, 10-14 and 15-24	9.2	15.1	24.4	* 1.2	25.6	13.1	38.7
Families without dependants	635.3	323.0	958.2	33.3	991.5	317.3	1,308.8
Total	1,126.5	987.3	2,113.9	90.8	2,204.7	964.4	3,169.1
HUSBAND NOT IN THE LABOUR FORCE							
Families with dependants	21.3	23.7	45.0	* 3.0	48.0	95.1	143.0
Age of dependants							
0-14 only	13.8	16.5	30.3	* 2.1	32.4	56.0	88.3
Other	7.5	7.2	14.7	* 0.9	15.6	39.1	54.7
Families without dependants	34.9	45.5	80.4	4.7	85.1	800.3	885.3
Total	56.2	69.2	125.3	7.7	133.0	895.3	1,028.4
TOTAL							
Families with dependants	512.6	688.1	1,200.7	60.5	1,261.2	742.2	2,003.4
Age of dependants							
0-9 only	164.1	287.0	451.1	27.3	478.5	396.5	875.0
0-4 only	72.4	121.1	193.4	13.1	206.6	216.3	422.9
5-9 only	53.7	76.8	130.4	6.2	136.7	53.0	189.7
0-4 and 5-9	38.1	89.2	127.2	8.0	135.2	127.1	262.3
10-14 only	65.5	77.7	143.2	5.0	148.2	56.8	205.0
15-24 only	112.3	98.4	210.8	8.0	218.8	77.0	295.7
0-9 and 10-14	72.7	121.3	194.0	11.5	205.4	118.4	323.8
0-4 and 10-14	6.8	11.2	18.0	* 1.3	19.3	17.9	37.2
5-9 and 10-14	61.1	93.3	154.4	7.6	162.0	70.0	232.0
0-4, 5-9 and 10-14	4.8	16.9	21.6	* 2.5	24.2	30.4	54.6
0-9 and 15-24	16.7	11.8	28.5	* 1.8	30.3	16.2	46.5
5-9 and 15-24	13.4	9.1	22.6	* 1.4	23.9	10.9	34.8
10-14 and 15-24	69.0	74.1	143.1	4.4	147.5	49.3	196.8
0-9, 10-14 and 15-24	12.2	17.7	30.0	* 2.6	32.6	27.9	60.5
5-9, 10-14 and 15-24	9.6	15.4	25.0	* 1.7	26.7	17.7	44.4
Families without dependants	670.2	368.4	1,038.6	38.0	1,076.6	1,117.6	2,194.1
Total	1,182.7	1,056.5	2,239.2	98.5	2,337.8	1,859.7	4,197.5

14. COUPLE FAMILIES: LABOUR FORCE STATUS OF HUSBAND AND WIFE AND AGE OF YOUNGEST DEPENDANT, JUNE 1999
(*000 families)

	<i>Wife employed</i>			<i>Wife unemp- loyed</i>	<i>Wife in the labour force</i>	<i>Wife not in the labour force</i>	<i>Total</i>
	<i>Full time</i>	<i>Part time</i>	<i>Total</i>				
HUSBAND EMPLOYED FULL TIME							
Families with dependants	457.0	621.4	1,078.4	39.7	1,118.1	553.0	1,671.1
Age of youngest dependant							
0-4	111.9	223.5	335.4	15.9	351.2	322.8	674.1
5-9	125.0	174.6	299.6	11.4	311.0	111.3	422.3
10-14	120.8	136.0	256.8	7.5	264.3	72.7	337.0
15-24	99.4	87.3	186.6	4.9	191.5	46.2	237.8
Families without dependants	592.9	267.7	860.6	20.7	881.3	248.0	1,129.3
<i>Total</i>	<i>1,049.9</i>	<i>889.1</i>	<i>1,939.0</i>	<i>60.4</i>	<i>1,999.4</i>	<i>801.0</i>	<i>2,800.4</i>
HUSBAND EMPLOYED: TOTAL							
Families with dependants	484.0	653.6	1,137.6	44.4	1,181.9	595.9	1,777.8
Age of youngest dependant							
0-4	118.1	232.6	350.7	18.2	369.0	345.3	714.3
5-9	131.4	183.4	314.9	12.1	326.9	119.9	446.8
10-14	128.0	144.2	272.2	8.3	280.5	79.2	359.7
15-24	106.4	93.3	199.7	5.7	205.5	51.5	257.0
Families without dependants	626.8	314.3	941.1	25.3	966.4	298.6	1,265.0
<i>Total</i>	<i>1,110.8</i>	<i>967.9</i>	<i>2,078.6</i>	<i>69.7</i>	<i>2,148.3</i>	<i>894.4</i>	<i>3,042.8</i>
HUSBAND UNEMPLOYED							
Families with dependants	7.3	10.8	18.1	13.2	31.3	51.2	82.5
Age of youngest dependant							
0-4	* 2.3	* 3.6	5.9	7.4	13.2	29.4	42.7
5-9	* 2.7	4.5	7.2	* 3.1	10.3	10.3	20.7
10-14	* 1.6	* 1.7	* 3.2	* 0.8	* 4.0	8.4	12.4
15-24	* 0.7	* 1.1	* 1.8	* 1.9	* 3.7	* 3.1	6.7
Families without dependants	8.5	8.6	17.2	8.0	25.1	18.7	43.8
<i>Total</i>	<i>15.8</i>	<i>19.5</i>	<i>35.3</i>	<i>21.1</i>	<i>56.4</i>	<i>69.9</i>	<i>126.3</i>
HUSBAND IN THE LABOUR FORCE							
Families with dependants	491.3	664.4	1,155.7	57.5	1,213.2	647.1	1,860.3
Age of youngest dependant							
0-4	120.4	236.2	356.6	25.6	382.2	374.7	756.9
5-9	134.2	187.9	322.1	15.2	337.3	130.3	467.5
10-14	129.5	145.9	275.4	9.1	284.5	87.6	372.1
15-24	107.2	94.4	201.5	7.6	209.2	54.5	263.7
Families without dependants	635.3	323.0	958.2	33.3	991.5	317.3	1,308.8
<i>Total</i>	<i>1,126.5</i>	<i>987.3</i>	<i>2,113.9</i>	<i>90.8</i>	<i>2,204.7</i>	<i>964.4</i>	<i>3,169.1</i>
HUSBAND NOT IN THE LABOUR FORCE							
Families with dependants	21.3	23.7	45.0	* 3.0	48.0	95.1	143.0
Age of youngest dependant							
0-4	7.5	7.2	14.7	* 0.6	15.3	32.6	47.9
5-9	* 3.7	6.6	10.3	* 1.8	12.0	21.4	33.4
10-14	4.9	5.9	10.8	* 0.3	11.1	18.6	29.7
15-24	5.2	* 4.0	9.2	* 0.4	9.6	22.4	32.0
Families without dependants	34.9	45.5	80.4	4.7	85.1	800.3	885.3
<i>Total</i>	<i>56.2</i>	<i>69.2</i>	<i>125.3</i>	<i>7.7</i>	<i>133.0</i>	<i>895.3</i>	<i>1,028.4</i>
TOTAL							
Families with dependants	512.6	688.1	1,200.7	60.5	1,261.2	742.2	2,003.4
Age of youngest dependant							
0-4	127.9	243.4	371.3	26.2	397.5	407.4	804.9
5-9	137.9	194.5	332.4	17.0	349.3	151.6	501.0
10-14	134.5	151.8	286.3	9.4	295.6	106.2	401.8
15-24	112.3	98.4	210.8	8.0	218.8	77.0	295.7
Families without dependants	670.2	368.4	1,038.6	38.0	1,076.6	1,117.6	2,194.1
Total	1,182.7	1,056.5	2,239.2	98.5	2,337.8	1,859.7	4,197.5

**15. COUPLE FAMILIES WITH HUSBAND IN THE LABOUR FORCE: LABOUR FORCE STATUS, AGE OF WIFE AND AGE OF
DEPENDANTS, JUNE 1999**
(*000 families)

	<i>Wife employed</i>			<i>Wife unemployed</i>	<i>Wife in the labour force</i>	<i>Wife not in the labour force</i>	
	<i>Full time</i>	<i>Part time</i>	<i>Total</i>				<i>Total</i>
WIFE AGED 15-34							
Families with dependants	113.0	195.0	308.1	27.0	335.0	303.3	638.3
Age of dependants							
0-9 only	89.3	167.1	256.4	19.5	276.0	261.2	537.2
0-4 only	49.2	90.7	139.9	11.3	151.2	164.9	316.1
5-9 only	20.9	27.0	47.8	* 2.8	50.6	19.0	69.7
0-4 and 5-9	19.3	49.5	68.7	5.4	74.2	77.3	151.4
10-14 only	4.8	* 2.6	7.4	* 1.1	8.4	* 2.1	10.5
15-24 only	* 0.8	* 0.6	* 1.4	* 0.1	* 1.6	* 0.0	* 1.6
0-9 and 10-14	14.7	21.0	35.7	5.3	41.0	35.2	76.1
0-4 and 10-14	* 2.4	4.4	6.8	* 1.0	7.8	8.9	16.8
5-9 and 10-14	9.7	12.3	22.0	* 2.3	24.3	14.8	39.1
0-4, 5-9 and 10-14	* 2.6	* 4.3	6.8	* 2.0	8.8	11.4	20.2
10-14 and 15-24	* 0.6	* 1.2	* 1.9	* 0.5	* 2.4	* 1.8	* 4.2
Other(a)	* 2.7	* 2.5	5.2	* 0.4	5.7	* 3.1	8.8
Families without dependants	280.2	57.9	338.0	14.6	352.6	32.6	385.3
Total	393.2	252.9	646.1	41.6	687.7	335.9	1,023.6
WIFE AGED 35-44							
Families with dependants	248.0	343.1	591.1	23.6	614.7	254.4	869.1
Age of dependants							
0-9 only	62.0	105.3	167.3	6.2	173.5	97.8	271.3
0-4 only	18.9	24.9	43.8	* 1.3	45.2	38.3	83.4
5-9 only	27.0	42.7	69.7	* 3.0	72.7	21.3	94.0
0-4 and 5-9	16.1	37.7	53.8	* 1.9	55.6	38.2	93.8
10-14 only	37.1	52.2	89.2	* 2.7	91.9	29.1	121.1
15-24 only	33.0	27.0	60.0	* 3.7	63.6	13.6	77.2
0-9 and 10-14	53.3	91.7	145.0	5.1	150.1	63.5	213.6
0-4 and 10-14	* 3.8	5.8	9.7	* 0.3	10.0	7.1	17.0
5-9 and 10-14	47.5	73.6	121.1	* 4.2	125.3	42.8	168.1
0-4, 5-9 and 10-14	* 2.0	12.3	14.3	* 0.6	14.8	13.7	28.5
10-14 and 15-24	41.4	44.7	86.1	* 2.7	88.8	24.6	113.4
Other(a)	21.2	22.2	43.4	* 3.3	46.7	25.8	72.5
Families without dependants	92.3	34.2	126.4	4.8	131.2	22.4	153.7
Total	340.3	377.2	717.5	28.4	745.9	276.9	1,022.8
WIFE AGED 45 AND OVER							
Families with dependants	130.3	126.3	256.5	7.0	263.5	89.4	352.9
Age of dependants							
0-9 only	* 3.8	6.1	9.9	* 0.9	10.8	6.8	17.6
0-4 only	* 0.3	* 0.5	* 0.8	* 0.2	* 1.1	* 0.7	* 1.7
5-9 only	* 3.5	5.2	8.7	* 0.3	9.1	4.7	13.8
0-4 and 5-9	* 0.0	* 0.4	* 0.4	* 0.3	* 0.7	* 1.4	* 2.1
10-14 only	20.1	19.1	39.2	* 0.9	40.1	14.8	54.9
15-24 only	73.3	66.8	140.1	* 3.8	143.9	41.0	184.9
0-9 and 10-14	* 3.4	4.4	7.8	* 0.0	7.8	5.4	13.2
0-4 and 10-14	* 0.3	* 0.3	* 0.6	* 0.0	* 0.6	* 0.0	* 0.6
5-9 and 10-14	* 3.2	* 3.7	6.9	* 0.0	6.9	5.4	12.2
0-4, 5-9 and 10-14	* 0.0	* 0.3	* 0.3	* 0.0	* 0.3	* 0.0	* 0.3
10-14 and 15-24	25.5	26.1	51.6	* 1.2	52.8	15.3	68.1
Other(a)	* 4.1	* 3.8	7.8	* 0.2	8.0	6.2	14.2
Families without dependants	262.8	230.9	493.8	13.9	507.7	262.2	769.9
Total	393.1	357.2	750.3	20.8	771.2	351.6	1,122.8
TOTAL							
Families with dependants	491.3	664.4	1,155.7	57.5	1,213.2	647.1	1,860.3
Age of dependants							
0-9 only	155.1	278.5	433.6	26.7	460.3	365.7	826.0
0-4 only	68.4	116.2	184.5	12.9	197.4	203.8	401.2
5-9 only	51.3	74.9	126.2	6.1	132.4	45.1	177.5
0-4 and 5-9	35.4	87.5	122.9	7.6	130.5	116.9	247.3
10-14 only	62.0	73.9	135.8	4.7	140.5	46.0	186.5
15-24 only	107.2	94.4	201.5	7.6	209.2	54.5	263.7
0-9 and 10-14	71.5	117.1	188.5	10.3	198.9	104.0	302.9
0-4 and 10-14	6.5	10.6	17.1	* 1.3	18.4	16.0	34.4
5-9 and 10-14	60.4	89.6	150.0	6.5	156.5	62.9	219.4
0-4, 5-9 and 10-14	4.6	16.9	21.4	* 2.5	24.0	25.1	49.0
10-14 and 15-24	67.6	72.0	139.6	4.4	144.0	41.6	185.6
Other(a)	28.0	28.5	56.5	* 3.8	60.3	35.2	95.5
Families without dependants	635.3	323.0	958.2	33.3	991.5	317.3	1,308.8
Total	1,126.5	987.3	2,113.9	90.8	2,204.7	964.4	3,169.1

(a) Comprises all other combinations of dependants aged 0-24.

16. COUPLE FAMILIES WITH WIFE IN THE LABOUR FORCE: LABOUR FORCE STATUS, AGE OF HUSBAND AND AGE OF DEPENDANTS
(**'000 families**)

	<i>Husband employed</i>		<i>Husband unemployed</i>	<i>Husband in the labour force</i>	<i>Husband not in the labour force</i>	<i>Total</i>
	<i>Full time</i>	<i>Total</i>				
HUSBAND AGED 15-34						
Families with dependants	221.2	233.2	10.6	243.8	10.4	254.2
Age of dependants						
0-9 only	191.7	201.7	8.9	210.6	9.0	219.6
0-4 only	119.8	124.8	4.7	129.5	5.3	134.8
5-9 only	26.8	29.0	* 2.6	31.6	* 1.4	33.0
0-4 and 5-9	45.1	47.9	* 1.6	49.5	* 2.3	51.8
10-14 only	* 4.2	5.3	* 0.0	5.3	* 0.7	6.0
15-24 only	* 1.7	* 1.7	* 0.3	* 2.0	* 0.0	* 2.0
0-9 and 10-14	19.6	20.4	* 1.3	21.7	* 0.7	22.5
0-4 and 10-14	4.8	4.8	* 0.0	4.8	* 0.1	4.9
5-9 and 10-14	11.6	12.0	* 0.7	12.7	* 0.7	13.3
0-4, 5-9 and 10-14	* 3.3	* 3.6	* 0.6	* 4.3	* 0.0	* 4.3
10-14 and 15-24	* 1.0	* 1.1	* 0.0	* 1.1	* 0.0	* 1.1
Other(a)	* 2.9	* 2.9	* 0.0	* 2.9	* 0.0	* 2.9
Families without dependants	283.7	301.0	9.6	310.6	6.8	317.5
Total	504.9	534.2	20.2	554.4	17.3	571.7
HUSBAND AGED 35-44						
Families with dependants	516.2	538.3	14.3	552.6	14.9	567.5
Age of dependants						
0-9 only	197.2	204.6	5.0	209.7	6.2	215.8
0-4 only	58.8	61.3	* 1.8	63.1	* 1.8	64.9
5-9 only	70.8	72.8	* 2.0	74.8	* 2.1	76.9
0-4 and 5-9	67.6	70.6	* 1.2	71.8	* 2.3	74.1
10-14 only	65.9	68.8	* 2.2	71.0	* 2.1	73.2
15-24 only	35.1	36.1	* 1.3	37.5	* 1.1	38.5
0-9 and 10-14	129.9	136.2	* 3.4	139.6	* 3.6	143.2
0-4 and 10-14	9.0	10.7	* 0.8	11.5	* 0.5	12.0
5-9 and 10-14	103.5	107.9	* 2.0	109.9	* 3.0	112.9
0-4, 5-9 and 10-14	17.3	17.7	* 0.6	18.2	* 0.1	18.3
10-14 and 15-24	55.0	57.8	* 0.3	58.0	* 0.6	58.6
Other(a)	33.1	34.7	* 2.1	36.8	* 1.4	38.2
Families without dependants	127.0	133.3	* 2.9	136.2	4.6	140.7
Total	643.3	671.6	17.2	688.8	19.5	708.3
HUSBAND AGED 45 AND OVER						
Families with dependants	380.6	410.4	6.4	416.8	22.6	439.4
Age of dependants						
0-9 only	35.4	38.8	* 1.2	40.0	* 3.0	43.0
0-4 only	* 4.2	4.7	* 0.2	4.8	* 2.0	6.8
5-9 only	23.1	25.9	* 0.1	26.0	* 0.8	26.8
0-4 and 5-9	8.2	8.3	* 0.9	9.2	* 0.2	9.4
10-14 only	57.9	63.0	* 1.2	64.2	4.8	69.0
15-24 only	154.7	167.7	* 2.0	169.7	8.5	178.2
0-9 and 10-14	35.2	37.3	* 0.2	37.5	* 2.2	39.8
0-4 and 10-14	* 1.4	* 2.1	* 0.0	* 2.1	* 0.3	* 2.4
5-9 and 10-14	32.3	33.7	* 0.2	33.9	* 1.8	35.8
0-4, 5-9 and 10-14	* 1.5	* 1.5	* 0.0	* 1.5	* 0.1	* 1.6
10-14 and 15-24	80.2	84.5	* 0.3	84.8	* 2.8	87.7
Other(a)	17.2	19.2	* 1.4	20.6	* 1.2	21.8
Families without dependants	470.6	532.0	12.7	544.7	73.7	618.4
Total	851.2	942.5	19.1	961.5	96.3	1,057.8
TOTAL						
Families with dependants	1,118.1	1,181.9	31.3	1,213.2	48.0	1,261.2
Age of dependants						
0-9 only	424.3	445.2	15.1	460.3	18.2	478.5
0-4 only	182.8	190.8	6.7	197.4	9.1	206.6
5-9 only	120.7	127.7	4.7	132.4	* 4.3	136.7
0-4 and 5-9	120.9	126.8	* 3.7	130.5	4.7	135.2
10-14 only	128.1	137.1	* 3.4	140.5	7.6	148.2
15-24 only	191.5	205.5	* 3.7	209.2	9.6	218.8
0-9 and 10-14	184.7	193.9	4.9	198.9	6.6	205.4
0-4 and 10-14	15.2	17.6	* 0.8	18.4	* 0.9	19.3
5-9 and 10-14	147.4	153.6	* 2.9	156.5	5.5	162.0
0-4, 5-9 and 10-14	22.1	22.8	* 1.2	24.0	* 0.2	24.2
10-14 and 15-24	136.3	143.4	* 0.6	144.0	* 3.5	147.5
Other(a)	53.2	56.8	* 3.6	60.3	* 2.5	62.9
Families without dependants	881.3	966.4	25.1	991.5	85.1	1,076.6
Total	1,999.4	2,148.3	56.4	2,204.7	133.0	2,337.8

(a) Comprises all other combinations of dependants aged 0-24.

17. COUPLE FAMILIES WITH HUSBAND UNEMPLOYED: DURATION OF UNEMPLOYMENT, AND LABOUR FORCE STATUS OF WIFE, JUNE 1999

	Duration of unemployment of husband (weeks)							
	Under 4	4 and under 13	13 and under 26	26 and under 52	52 and over	Total	Average duration	Median duration
	— '000 families —						— weeks —	
Couple family with husband unemployed	17.9	19.8	18.8	16.8	53.1	126.3	73.1	29
Wife in the labour force	12.2	9.4	9.5	6.7	18.6	56.4	60.3	22
Wife employed	8.5	7.1	6.1	* 3.8	9.8	35.3	46.2	17
Wife unemployed	* 3.7	* 2.3	* 3.4	* 2.9	8.8	21.1	83.9	32
Wife not in the labour force	5.7	10.4	9.3	10.1	34.5	69.9	83.4	49
With dependants								
Wife in the labour force	6.8	5.2	5.7	* 4.1	9.5	31.3	54.7	21
Wife employed	4.5	* 3.8	* 3.2	* 2.2	4.5	18.1	38.6	17
Wife unemployed	* 2.3	* 1.4	* 2.5	* 2.0	4.9	13.2	76.8	* 26
Wife not in the labour force	4.4	7.9	6.6	8.6	23.8	51.2	83.4	40
Without dependants								
Wife in the labour force	5.4	* 4.2	* 3.8	* 2.6	9.1	25.1	67.3	23
Wife employed	* 4.0	* 3.3	* 3.0	* 1.6	5.3	17.2	54.2	18
Wife unemployed	* 1.4	* 0.9	* 0.9	* 1.0	* 3.8	8.0	* 95.6	* 44
Wife not in the labour force	* 1.3	* 2.4	* 2.7	* 1.5	10.7	18.7	83.5	57

18. COUPLE FAMILIES WITH WIFE UNEMPLOYED: DURATION OF UNEMPLOYMENT, AND LABOUR FORCE STATUS OF HUSBAND, JUNE 1999

	Duration of unemployment of wife (weeks)							
	Under 4	4 and under 13	13 and under 26	26 and under 52	52 and over	Total	Average duration	Median duration
	— '000 families —						— weeks —	
Couple family with wife unemployed	25.7	20.8	14.6	11.2	26.2	98.5	48.8	16
Husband in the labour force	23.3	19.7	13.6	10.8	23.4	90.8	46.4	16
Husband employed	20.6	16.3	10.8	8.4	13.6	69.7	35.9	8
Husband not in the labour force	* 2.4	* 1.1	* 1.0	* 0.3	* 2.8	7.7	* 76.1	* 17
With dependants								
Husband in the labour force	14.2	13.9	10.5	5.4	13.4	57.5	41.6	13
Husband employed	12.9	11.3	8.9	* 3.9	7.5	44.4	30.3	8
Husband not in the labour force	* 0.7	* 0.2	* 0.7	* 0.3	* 1.0	* 3.0	* 82.9	* 23
Without dependants								
Husband in the labour force	9.1	5.7	* 3.1	5.4	10.0	33.3	54.8	20
Husband employed	7.7	5.1	* 1.9	4.5	6.1	25.3	45.8	10
Husband not in the labour force	* 1.7	* 0.9	* 0.2	* 0.0	* 1.8	4.7	* 71.9	* 5

19. ONE PARENT FAMILIES: LABOUR FORCE STATUS OF PARENT AND AGE OF DEPENDANTS, JUNE 1999
(^{'000 families})

	Families with dependants who are aged						Families with any dependants who are aged(c)		
	0-9 only	10-14 only	15-24 only	0-9 and 10-14	Other(a)	Total families(b)	0-9	10-14	15-24
ONE PARENT FAMILY WITH A MALE PARENT									
Parent employed	7.9	7.1	15.7	* 1.7	5.3	59.5	9.8	14.0	21.0
Full time	5.4	5.9	14.1	* 1.3	4.7	50.6	6.8	11.8	18.8
Part time	* 2.6	* 1.2	* 1.6	* 0.4	* 0.6	8.9	* 3.0	* 2.2	* 2.2
Parent unemployed	* 2.1	* 1.6	* 1.3	* 0.5	* 0.0	7.0	* 2.6	* 2.1	* 1.3
Parent in the labour force	10.0	8.7	17.0	* 2.3	5.3	66.6	12.4	16.2	22.3
Parent not in the labour force	7.1	* 3.7	* 2.4	* 1.5	* 1.8	42.7	8.8	6.7	* 4.2
Total	17.1	12.4	19.4	* 3.7	7.1	109.3	21.2	22.9	26.6
ONE PARENT FAMILY WITH A FEMALE PARENT									
Parent employed	78.4	45.4	48.8	28.1	27.5	285.3	113.9	97.3	76.3
Full time	30.2	22.0	32.5	12.6	11.5	147.4	44.8	45.3	44.1
Part time	48.2	23.4	16.3	15.5	16.0	137.8	69.1	52.0	32.3
Parent unemployed	21.4	7.2	4.5	5.2	* 4.0	48.3	28.4	15.9	8.5
Looking for full-time work	11.6	* 3.9	* 3.6	* 1.8	* 1.4	28.1	13.7	7.1	5.0
Looking for part-time work	9.8	* 3.3	* 0.9	* 3.4	* 2.6	20.2	14.7	8.8	* 3.5
Parent in the labour force	99.8	52.6	53.3	33.3	31.5	333.6	142.3	113.3	84.8
Parent not in the labour force	110.8	31.9	14.6	30.2	27.6	329.6	155.7	82.4	42.2
Total	210.6	84.5	67.9	63.5	59.1	663.1	298.0	195.7	127.0
TOTAL									
Parent employed	86.4	52.5	64.5	29.8	32.8	344.8	123.7	111.3	97.4
Full time	35.6	27.9	46.6	14.0	16.2	198.0	51.6	57.2	62.9
Part time	50.8	24.6	17.9	15.9	16.6	146.8	72.1	54.2	34.5
Parent unemployed	23.5	8.8	5.8	5.8	* 4.0	55.4	31.0	18.1	9.7
Looking for full-time work	13.4	5.5	4.5	* 1.8	* 1.4	33.7	15.4	8.7	5.9
Looking for part-time work	10.1	* 3.3	* 1.3	* 4.0	* 2.6	21.6	15.5	9.4	* 3.8
Parent in the labour force	109.8	61.3	70.3	35.6	36.8	400.2	154.7	129.4	107.1
Parent not in the labour force	117.9	35.6	17.0	31.7	29.4	372.3	164.5	89.1	46.4
Total	227.7	96.9	87.3	67.2	66.2	772.4	319.2	218.6	153.5

(a) Comprises all other combinations of dependants aged 0-24. (b) Includes families without dependants. (c) Families with dependants in more than one group are included in each relevant group.

20. ONE PARENT FAMILIES: LABOUR FORCE STATUS OF PARENT AND AGE OF YOUNGEST DEPENDANT, JUNE 1999
(^{'000 families})

	<i>Parent employed</i>			<i>Parent unemployed</i>	<i>Parent in the labour force</i>	<i>Parent not in the labour force</i>	<i>Total</i>
	<i>Full time</i>	<i>Part time</i>	<i>Total</i>				
ONE PARENT FAMILY WITH A MALE PARENT							
With dependants	31.4	6.4	37.8	5.5	43.2	16.5	59.7
Age of youngest dependant							
0-4	* 2.0	* 1.5	* 3.5	* 1.4	4.9	4.4	9.3
5-9	4.8	* 1.5	6.2	* 1.2	7.4	4.5	11.9
10-14	10.5	* 1.8	12.3	* 1.6	13.9	5.2	19.1
15-24	14.1	* 1.6	15.7	* 1.3	17.0	* 2.4	19.4
Without dependants	19.2	* 2.6	21.8	* 1.6	23.3	26.2	49.6
<i>Total</i>	<i>50.6</i>	<i>8.9</i>	<i>59.5</i>	<i>7.0</i>	<i>66.6</i>	<i>42.7</i>	<i>109.3</i>
ONE PARENT FAMILY WITH A FEMALE PARENT							
With dependants	109.0	119.3	228.3	42.3	270.6	215.0	485.6
Age of youngest dependant							
0-4	15.4	25.8	41.2	15.9	57.1	103.8	160.9
5-9	29.4	43.4	72.8	12.5	85.3	51.9	137.1
10-14	31.7	33.9	65.6	9.4	75.0	44.8	119.7
15-24	32.5	16.3	48.8	4.5	53.3	14.6	67.9
Without dependants	38.4	18.5	56.9	6.0	63.0	114.5	177.5
<i>Total</i>	<i>147.4</i>	<i>137.8</i>	<i>285.3</i>	<i>48.3</i>	<i>333.6</i>	<i>329.6</i>	<i>663.1</i>
TOTAL							
With dependants	140.4	125.7	266.1	47.7	313.8	231.5	545.4
Age of youngest dependant							
0-4	17.4	27.3	44.7	17.3	62.0	108.2	170.2
5-9	34.2	44.8	79.0	13.7	92.7	56.3	149.0
10-14	42.2	35.7	77.9	11.0	88.9	50.0	138.8
15-24	46.6	17.9	64.5	5.8	70.3	17.0	87.3
Without dependants	57.6	21.1	78.7	7.6	86.3	140.7	227.1
Total	198.0	146.8	344.8	55.4	400.2	372.3	772.4

21. ONE PARENT FAMILIES WITH A MALE PARENT: LABOUR FORCE STATUS AND AGE, JUNE 1999
(*000 families)

	<i>Age of parent (years)</i>			<i>Total</i>
	<i>15-34</i>	<i>35-44</i>	<i>45 and over</i>	
Parent in the labour force	7.5	24.4	34.7	66.6
Parent employed	5.6	21.1	32.8	59.5
Parent unemployed	* 1.9	* 3.2	* 1.9	7.0
Parent not in the labour force	* 3.1	6.6	33.0	42.7
Total	10.7	30.9	67.7	109.3

22. ONE PARENT FAMILIES WITH A FEMALE PARENT: LABOUR FORCE STATUS AND AGE, JUNE 1999
(*000 families)

	<i>Age of parent (years)</i>					<i>Total</i>
	<i>15-24</i>	<i>25-34</i>	<i>35-44</i>	<i>45-54</i>	<i>55 and over</i>	
Parent in the labour force	15.8	70.2	133.5	97.6	16.5	333.6
Parent employed	8.4	56.3	115.5	88.9	16.1	285.3
Parent unemployed	7.3	13.9	18.0	8.6	* 0.4	48.3
Parent not in the labour force	35.7	77.6	73.5	36.7	106.1	329.6
Total	51.4	147.8	207.0	134.3	122.6	663.1

23. ONE PARENT FAMILIES WITH PARENT EMPLOYED: FULL-TIME AND PART-TIME STATUS AND NUMBER OF DEPENDANTS, JUNE 1999
(*000 families)

<i>Number of dependants</i>	<i>Male parent employed</i>			<i>Female parent employed</i>		
	<i>Full time</i>	<i>Part time</i>	<i>Total</i>	<i>Full time</i>	<i>Part time</i>	<i>Total</i>
None	19.2	* 2.6	21.8	38.4	18.5	56.9
One	21.0	* 3.4	24.4	63.8	62.9	126.7
Two	8.7	* 2.4	11.0	36.0	38.9	74.9
Three or more	* 1.7	* 0.7	* 2.4	9.2	17.6	26.7
Total	50.6	8.9	59.5	147.4	137.8	285.3

24. ONE PARENT FAMILIES WITH PARENT UNEMPLOYED: DURATION OF UNEMPLOYMENT, JUNE 1999

	Duration of unemployment of parent (weeks)				Total	Average duration	Median duration
	Under 8	8 and under 26	26 and under 52	52 and over			
	—'000 families —					— weeks —	
Male parent unemployed	* 1.5	* 1.3	* 1.5	* 2.7	7.0	* 51.1	* 30
Female parent unemployed	12.3	14.6	7.6	13.8	48.3	53.3	22
Total	13.8	15.9	9.2	16.5	55.4	53.0	22

**25. PERSONS: RELATIONSHIP IN HOUSEHOLD AND LABOUR FORCE STATUS OF PERSONS AGED 15 AND OVER(a),
JUNE 1999**

	<i>Employed</i>		<i>Unemployed</i> <i>Looking for full-time work</i>		<i>Labour force</i>	<i>Not in labour force</i>	<i>Civilian population aged 15 and over</i>	<i>Unemployment rate</i>	<i>Participation rate</i>	
	<i>Full-time</i>	<i>Part-time</i>	<i>Total</i>	<i>Total</i>						
	— '000 —									— per cent —
MALES										
Family member	3,486.3	519.4	4,005.8	227.7	268.1	4,273.9	1,476.7	5,750.6	6.3	74.3
Husband	2,848.2	245.4	3,093.5	121.8	129.5	3,223.1	1,027.1	4,250.2	4.0	75.8
With dependants	1,707.9	109.6	1,817.5	80.9	85.9	1,903.4	147.2	2,050.5	4.5	92.8
Without dependants	1,140.3	135.8	1,276.0	40.9	43.7	1,319.7	879.9	2,199.6	3.3	60.0
Lone parent	50.8	8.8	59.6	5.7	7.1	66.7	42.2	109.0	10.6	61.2
With dependants	31.8	6.3	38.1	* 4.3	5.5	43.7	16.6	60.2	12.6	72.5
Without dependants	19.0	* 2.5	21.5	* 1.3	* 1.6	23.1	25.7	48.8	* 6.9	47.4
Dependent student(b)	* 4.3	163.5	167.8	* 4.1	30.5	198.3	267.6	465.9	15.4	42.6
Non-dependent child(c)	519.9	82.3	602.3	84.3	87.2	689.4	81.6	771.1	12.6	89.4
Other family person	63.1	19.4	82.5	11.8	13.8	96.3	58.1	154.4	14.4	62.4
Non-family member	696.5	114.9	811.4	77.6	84.5	895.8	342.7	1,238.5	9.4	72.3
Lone person	365.7	54.2	420.0	38.8	41.3	461.3	262.4	723.7	9.0	63.7
Not living alone	330.7	60.7	391.4	38.8	43.2	434.6	80.3	514.8	9.9	84.4
Total	4,182.8	634.3	4,817.1	305.3	352.6	5,169.7	1,819.4	6,989.1	6.8	74.0
FEMALES										
Family member	1,632.5	1,492.9	3,125.3	129.1	217.6	3,343.0	2,585.8	5,928.8	6.5	56.4
Wife	1,163.3	1,041.5	2,204.8	60.8	96.8	2,301.6	1,848.2	4,149.8	4.2	55.5
With dependants	505.3	678.3	1,183.7	33.6	60.1	1,243.7	733.0	1,976.7	4.8	62.9
Without dependants	658.0	363.2	1,021.2	27.2	36.7	1,057.9	1,115.2	2,173.1	3.5	48.7
Lone parent	145.5	137.1	282.6	27.9	48.2	330.8	327.6	658.3	14.6	50.2
With dependants	108.3	119.2	227.5	22.4	42.5	269.9	214.7	484.7	15.7	55.7
Without dependants	37.2	17.9	55.1	5.5	5.7	60.9	112.8	173.7	9.4	35.0
Dependent student(b)	* 4.2	203.3	207.5	* 3.5	31.0	238.5	238.7	477.2	13.0	50.0
Non-dependent child(c)	282.6	90.1	372.7	32.2	34.9	407.7	51.8	459.4	8.6	88.7
Other family person	36.9	20.8	57.7	4.6	6.7	64.4	119.7	184.1	10.4	35.0
Non-family member	421.4	143.9	565.3	39.7	48.7	614.0	644.1	1,258.0	7.9	48.8
Lone person	208.9	71.9	280.9	19.5	23.4	304.3	567.2	871.5	7.7	34.9
Not living alone	212.4	72.0	284.4	20.2	25.3	309.7	76.8	386.6	8.2	80.1
Total	2,053.8	1,636.8	3,690.6	168.8	266.4	3,957.0	3,229.9	7,186.8	6.7	55.1
PERSONS										
Family member	5,118.8	2,012.3	7,131.1	356.7	485.8	7,616.8	4,062.6	11,679.4	6.4	65.2
Husband or wife	4,011.5	1,286.9	5,298.4	182.6	226.3	5,524.7	2,875.3	8,400.0	4.1	65.8
With dependants	2,213.2	788.0	3,001.2	114.5	145.9	3,147.1	880.2	4,027.3	4.6	78.1
Without dependants	1,798.2	499.0	2,297.2	68.1	80.4	2,377.6	1,995.1	4,372.7	3.4	54.4
Lone parent	196.4	145.9	342.2	33.6	55.3	397.5	369.8	767.3	13.9	51.8
With dependants	140.1	125.5	265.6	26.8	48.0	313.6	231.3	544.9	15.3	57.6
Without dependants	56.3	20.4	76.6	6.8	7.3	83.9	138.5	222.4	8.7	37.7
Dependent student(b)	8.5	366.8	375.3	7.5	61.5	436.8	506.3	943.1	14.1	46.3
Non-dependent child(c)	802.5	172.5	975.0	116.6	122.1	1,097.1	133.4	1,230.5	11.1	89.2
Other family person	100.0	40.2	140.2	16.4	20.6	160.7	177.8	338.5	12.8	47.5
Non-family member	1,117.9	258.8	1,376.7	117.3	133.2	1,509.8	986.7	2,496.6	8.8	60.5
Lone person	574.7	126.2	700.8	58.3	64.7	765.5	829.7	1,595.2	8.5	48.0
Not living alone	543.2	132.6	675.8	59.0	68.5	744.3	157.1	901.4	9.2	82.6
Total	6,236.7	2,271.1	8,507.7	474.1	618.9	9,126.7	5,049.3	14,176.0	6.8	64.4

(a) Civilians who were residents of households where family status was determined. For further details see paragraphs 9 and 10 of the Explanatory Notes. (b) Excludes persons aged 20 attending school. Also excludes sons or daughters aged 15-24 who are classified as husbands, wives or lone parents. (c) Aged 15 and over.

**26. PERSONS: RELATIONSHIP IN HOUSEHOLD, LABOUR FORCE STATUS AND AGE OF PERSONS AGED 15 AND OVER(a),
JUNE 1999
(^{'000})**

	Age group (years)						65 and over	Total
	15-19	20-24	25-34	35-44	45-54	55-64		
MALES								
Family member	603.7	473.5	1,020.5	1,182.5	1,048.2	685.3	736.9	5,750.6
Husband with dependants	* 2.4	34.9	466.8	903.3	541.3	90.4	11.6	2,050.5
Employed	* 0.8	27.1	416.6	824.4	485.2	61.4	* 2.0	1,817.5
Not in the labour force	* 0.0	* 3.0	25.0	45.5	40.8	23.5	9.5	147.2
Husband without dependants	6.2	57.7	293.4	167.6	433.5	560.9	680.3	2,199.6
Employed	4.8	50.8	278.0	154.0	374.6	338.5	75.4	1,276.0
Not in the labour force	* 0.3	* 3.8	7.5	9.8	46.3	207.7	604.6	879.9
Lone parent with dependants	* 0.2	* 1.3	9.2	26.9	18.1	* 4.1	* 0.4	60.2
Employed	* 0.0	* 0.0	5.6	17.8	11.6	* 3.1	* 0.0	38.1
Not in the labour force	* 0.2	* 0.4	* 2.6	6.1	6.0	* 0.9	* 0.4	16.6
Lone parent without dependants	* 0.0	* 0.0	* 0.0	4.5	14.2	11.3	18.7	48.8
Employed	* 0.0	* 0.0	* 0.0	* 3.8	10.2	6.1	* 1.5	21.5
Not in the labour force	* 0.0	* 0.0	* 0.0	* 0.4	* 2.7	5.2	17.3	25.7
Dependent student(b)	399.6	66.3	465.9
Employed	134.3	33.6	167.8
Not in the labour force	238.9	28.7	267.6
Non-dependent child(c)	173.4	276.5	212.9	67.3	31.2	8.7	* 1.0	771.1
Employed	130.4	239.0	165.3	45.7	17.3	4.7	* 0.0	602.3
Not in the labour force	15.1	10.8	23.7	15.7	11.9	* 3.5	* 1.0	81.6
Other family person	22.0	36.8	38.2	12.9	9.8	9.9	24.9	154.4
Employed	10.1	26.8	29.8	7.5	5.3	* 2.7	* 0.3	82.5
Not in the labour force	9.4	4.9	4.5	* 4.0	* 3.5	7.2	24.6	58.1
Non-family member	39.8	164.9	339.1	226.0	168.4	115.8	184.5	1,238.5
Lone person	7.4	30.8	139.0	154.0	129.0	97.5	166.0	723.7
Employed	* 3.8	24.5	119.0	123.0	93.0	41.4	15.3	420.0
Not in the labour force	* 2.9	* 2.1	12.0	19.4	26.8	49.1	150.1	262.4
Not living alone	32.4	134.1	200.2	72.0	39.4	18.3	18.5	514.8
Employed	21.4	100.8	168.8	59.7	29.9	9.7	* 1.0	391.4
Not in the labour force	6.1	19.1	15.3	7.4	7.1	7.8	17.5	80.3
Total	643.5	638.4	1,359.6	1,408.5	1,216.6	801.1	921.4	6,989.1
Employed	305.5	502.6	1,183.0	1,235.9	1,027.0	467.6	95.5	4,817.1
Not in the labour force	272.9	72.7	90.6	108.2	145.1	305.0	825.0	1,819.4
FEMALES								
Family member	571.8	478.8	1,169.3	1,316.5	1,064.7	653.2	674.5	5,928.8
Wife with dependants	6.8	61.5	606.9	907.7	360.5	30.3	* 2.9	1,976.7
Employed	* 0.6	17.0	300.2	599.9	254.1	11.8	* 0.2	1,183.7
Not in the labour force	5.0	39.2	285.1	283.0	99.8	18.3	* 2.7	733.0
Wife without dependants	14.7	93.5	282.9	166.9	547.5	550.4	517.1	2,173.1
Employed	8.5	78.6	252.1	130.2	356.1	172.0	23.7	1,021.2
Not in the labour force	* 2.1	10.5	25.0	30.8	180.1	373.1	493.4	1,115.2
Lone parent with dependants	7.5	44.0	147.4	195.8	81.7	7.8	* 0.4	484.7
Employed	* 1.1	7.4	55.8	108.1	52.6	* 2.4	* 0.0	227.5
Not in the labour force	5.3	30.3	77.7	71.7	24.0	5.3	* 0.4	214.7
Lone parent without dependants	* 0.0	* 0.0	* 0.6	10.8	49.4	37.3	75.7	173.7
Employed	* 0.0	* 0.0	* 0.6	6.8	34.3	10.8	* 2.6	55.1
Not in the labour force	* 0.0	* 0.0	* 0.0	* 1.9	11.7	26.2	73.1	112.8
Dependent student(b)	416.0	61.2	477.2
Employed	168.3	39.2	207.5
Not in the labour force	219.2	19.4	238.7
Non-dependent child(c)	107.4	190.8	112.4	27.2	15.5	4.6	* 1.5	459.4
Employed	86.9	167.6	92.5	16.9	7.5	* 1.3	* 0.0	372.7
Not in the labour force	10.0	6.8	14.4	8.5	7.3	* 3.3	* 1.5	51.8
Other family person	19.4	27.9	19.1	8.0	10.0	22.7	76.8	184.1
Employed	7.7	17.0	16.7	6.4	4.5	4.4	* 1.0	57.7
Not in the labour force	10.5	7.7	* 1.6	* 1.6	5.0	17.4	75.9	119.7
Non-family member	46.6	143.3	219.7	113.6	135.8	144.1	454.9	1,258.0
Lone person	4.6	29.8	81.9	78.2	108.3	129.4	439.4	871.5
Employed	* 2.6	22.9	67.5	64.5	71.3	40.6	11.5	280.9
Not in the labour force	* 1.2	5.2	8.2	9.9	29.9	84.9	427.9	567.2
Not living alone	42.0	113.6	137.8	35.4	27.5	14.7	15.5	386.6
Employed	23.5	87.3	119.0	28.9	20.5	* 4.1	* 1.1	284.4
Not in the labour force	11.0	18.1	12.4	4.7	6.0	10.3	14.4	76.8
Total	618.4	622.2	1,389.0	1,430.1	1,200.6	797.3	1,129.3	7,186.8
Employed	299.1	437.0	904.3	961.8	800.9	247.5	40.1	3,690.6
Not in the labour force	264.3	137.2	424.3	412.2	363.8	538.8	1,089.2	3,229.9

(a) Civilians who were residents of households where family status was determined. For further details see paragraphs 9 and 10 of the Explanatory Notes. (b) Excludes persons aged 20 attending school. Also excludes sons or daughters aged 15-24 who are classified as husbands, wives or lone parents. (c) Aged 15 and over.

**26. PERSONS: RELATIONSHIP IN HOUSEHOLD, LABOUR FORCE STATUS AND AGE OF PERSONS AGED 15 AND OVER(a),
JUNE 1999—continued
(’000)**

	Age group (years)							Total
	15-19	20-24	25-34	35-44	45-54	55-64	65 and over	
PERSONS								
Family member	1,175.6	952.3	2,189.8	2,498.9	2,112.9	1,338.5	1,411.4	11,679.4
Husband or wife with dependants	9.2	96.4	1,073.7	1,811.0	901.9	120.7	14.5	4,027.3
Employed	* 1.4	44.1	716.7	1,424.3	739.2	73.2	* 2.3	3,001.2
Not in the labour force	5.0	42.1	310.1	328.4	140.5	41.8	12.2	880.2
Husband or wife without dependants	21.0	151.2	576.3	334.5	981.0	1,111.4	1,197.4	4,372.7
Employed	13.3	129.4	530.1	284.2	730.7	510.5	99.1	2,297.2
Not in the labour force	* 2.4	14.3	32.4	40.6	226.5	580.8	1,098.0	1,995.1
Lone parent with dependants	7.6	45.3	156.7	222.7	99.8	11.9	* 0.8	544.9
Employed	* 1.1	7.4	61.4	125.9	64.3	5.5	* 0.0	265.6
Not in the labour force	5.5	30.7	80.3	77.8	30.0	6.2	* 0.8	231.3
Lone parent without dependants	* 0.0	* 0.0	* 0.6	15.2	63.6	48.6	94.4	222.4
Employed	* 0.0	* 0.0	* 0.6	10.6	44.5	16.9	* 4.0	76.6
Not in the labour force	* 0.0	* 0.0	* 0.0	* 2.3	14.4	31.4	90.3	138.5
Dependent student(b)	815.6	127.5	943.1
Employed	302.5	72.8	375.3
Not in the labour force	458.2	48.2	506.3
Non-dependent child(c)	280.8	467.3	325.3	94.5	46.7	13.4	* 2.5	1,230.5
Employed	217.2	406.6	257.7	62.6	24.7	6.0	* 0.0	975.0
Not in the labour force	25.1	17.6	38.1	24.1	19.1	6.8	* 2.5	133.4
Other family person	41.4	64.7	57.3	21.0	19.8	32.6	101.7	338.5
Employed	17.8	43.9	46.5	14.0	9.8	7.1	* 1.2	140.2
Not in the labour force	19.9	12.6	6.0	5.6	8.5	24.6	100.5	177.8
Non-family member	86.4	308.2	558.8	339.6	304.2	259.9	639.4	2,496.6
Lone person	12.0	60.5	220.8	232.2	237.3	226.9	605.4	1,595.2
Employed	6.4	47.4	186.5	187.5	164.2	82.0	26.8	700.8
Not in the labour force	* 4.1	7.3	20.2	29.3	56.7	134.0	578.0	829.7
Not living alone	74.4	247.7	338.0	107.4	66.9	33.0	34.0	901.4
Employed	44.9	188.1	287.8	88.6	50.4	13.8	* 2.1	675.8
Not in the labour force	17.1	37.2	27.7	12.1	13.1	18.1	31.9	157.1
Total	1,261.9	1,260.5	2,748.6	2,838.5	2,417.1	1,598.5	2,050.7	14,176.0
Employed	604.6	939.6	2,087.3	2,197.7	1,827.9	715.0	135.6	8,507.7
Not in the labour force	537.2	209.9	514.9	520.4	508.9	843.8	1,914.3	5,049.3

(a) Civilians who were residents of households where family status was determined. For further details see paragraphs 9 and 10 of the Explanatory Notes. (b) Excludes persons aged 20 attending school. Also excludes sons or daughters aged 15-24 who are classified as husbands, wives or lone parents. (c) Aged 15 and over.

27. EMPLOYED PERSONS: RELATIONSHIP IN HOUSEHOLD, FULL-TIME AND PART-TIME STATUS(a), AND WEEKLY HOURS WORKED, JUNE 1999
(^{'000})

	Full time	Part time				Total	Average weekly hours worked			Total
		Weekly hours worked			Total		By full-time workers	By part-time workers		
		0(b)	1-14	15-34						
MALES										
Family member	3,486.3	26.2	228.8	264.4	519.4	4,005.8	44.0	15.1	40.2	
Husband	2,848.2	11.6	79.3	154.5	245.4	3,093.5	44.7	17.7	42.6	
With dependants	1,707.9	* 4.0	29.9	75.7	109.6	1,817.5	45.0	19.2	43.4	
Without dependants	1,140.3	7.6	49.4	78.8	135.8	1,276.0	44.3	16.5	41.3	
Lone parent	50.8	* 0.5	* 1.8	6.5	8.8	59.6	43.4	16.7	39.4	
With dependants	31.8	* 0.5	* 1.4	4.4	6.3	38.1	43.6	15.9	39.0	
Without dependants	19.0	* 0.0	* 0.4	* 2.1	* 2.5	21.5	42.9	* 19.0	40.2	
Dependent student(c)	* 4.3	10.3	114.0	39.2	163.5	167.8	38.3	9.7	10.5	
Non-dependent child(d)	519.9	* 2.0	26.3	54.0	82.3	602.3	40.2	18.0	37.2	
Other family person	63.1	* 1.7	7.4	10.2	19.4	82.5	42.2	14.9	35.8	
Non-family member	696.5	5.4	38.3	71.2	114.9	811.4	42.6	17.5	39.0	
Lone person	365.7	* 2.7	17.5	34.0	54.2	420.0	43.0	17.7	39.7	
Not living alone	330.7	* 2.6	20.8	37.2	60.7	391.4	42.2	17.2	38.3	
Total	4,182.8	31.6	267.1	335.6	634.3	4,817.1	43.7	15.5	40.0	
FEMALES										
Family member	1,632.5	79.2	576.4	837.2	1,492.9	3,125.3	38.8	16.0	27.9	
Wife	1,163.3	60.1	336.8	644.6	1,041.5	2,204.8	39.1	16.9	28.6	
With dependants	505.3	36.1	223.1	419.2	678.3	1,183.7	38.9	16.8	26.2	
Without dependants	658.0	24.1	113.7	225.4	363.2	1,021.2	39.2	17.2	31.4	
Lone parent	145.5	6.8	51.8	78.5	137.1	282.6	38.9	16.6	28.1	
With dependants	108.3	5.6	47.1	66.4	119.2	227.5	39.3	16.3	27.2	
Without dependants	37.2	* 1.1	4.7	12.1	17.9	55.1	37.5	18.6	31.4	
Dependent student(c)	* 4.2	9.4	153.9	40.0	203.3	207.5	37.3	9.5	10.1	
Non-dependent child(d)	282.6	* 2.9	24.0	63.2	90.1	372.7	38.1	19.6	33.7	
Other family person	36.9	* 0.0	9.9	11.0	20.8	57.7	35.8	16.2	28.7	
Non-family member	421.4	9.1	51.2	83.7	143.9	565.3	40.4	16.7	34.4	
Lone person	208.9	* 4.1	27.9	39.9	71.9	280.9	40.9	16.5	34.7	
Not living alone	212.4	5.0	23.2	43.8	72.0	284.4	40.0	16.8	34.1	
Total	2,053.8	88.3	627.6	920.9	1,636.8	3,690.6	39.2	16.1	28.9	
PERSONS										
Family member	5,118.8	105.5	805.2	1,101.6	2,012.3	7,131.1	42.3	15.8	34.8	
Husband or wife	4,011.5	71.8	416.1	799.1	1,286.9	5,298.4	43.1	17.1	36.8	
With dependants	2,213.2	40.1	253.0	494.9	788.0	3,001.2	43.6	17.1	36.7	
Without dependants	1,798.2	31.7	163.1	304.2	499.0	2,297.2	42.4	17.0	36.9	
Lone parent	196.4	7.3	53.7	84.9	145.9	342.2	40.0	16.6	30.0	
With dependants	140.1	6.1	48.6	70.8	125.5	265.6	40.3	16.2	28.9	
Without dependants	56.3	* 1.1	5.1	14.1	20.4	76.6	39.4	18.7	33.9	
Dependent student(c)	8.5	19.7	267.9	79.2	366.8	375.3	37.8	9.6	10.2	
Non-dependent child(d)	802.5	5.0	50.4	117.2	172.5	975.0	39.5	18.8	35.8	
Other family person	100.0	* 1.7	17.3	21.2	40.2	140.2	39.9	15.6	32.9	
Non-family member	1,117.9	14.4	89.5	154.8	258.8	1,376.7	41.8	17.0	37.1	
Lone person	574.7	6.8	45.4	73.9	126.2	700.8	42.2	17.1	37.7	
Not living alone	543.2	7.6	44.1	81.0	132.6	675.8	41.3	17.0	36.5	
Total	6,236.7	119.9	894.8	1,256.4	2,271.1	8,507.7	42.2	15.9	35.2	

(a) Civilians who were residents of households where family status was determined. For further details see paragraphs 9 and 10 of the Explanatory Notes. (b) Persons who had a job in which they usually worked part time, i.e. less than 35 hours per week, but were not at work during the reference week. (c) Excludes persons aged 20 attending school. Also excludes sons or daughters aged 15-24 who are classified as husbands, wives or lone parents. (d) Aged 15 and over.

28. UNEMPLOYED PERSONS: RELATIONSHIP IN HOUSEHOLD(a), UNEMPLOYMENT RATES AND DISTRIBUTION

	<i>Males</i>		<i>Females</i>		<i>Persons</i>	
	<i>June 1998</i>	<i>June 1999</i>	<i>June 1998</i>	<i>June 1999</i>	<i>June 1998</i>	<i>June 1999</i>
	UNEMPLOYMENT RATE (per cent)					
Family member	7.5	6.3	7.4	6.5	7.4	6.4
Husband or wife	5.0	4.0	4.7	4.2	4.9	4.1
With dependants	5.4	4.5	5.2	4.8	5.3	4.6
Without dependants	4.4	3.3	4.1	3.5	4.3	3.4
Lone parent	10.4	10.6	16.1	14.6	15.1	13.9
With dependants	* 10.0	12.6	18.1	15.7	16.9	15.3
Without dependants	* 11.1	* 6.9	8.6	9.4	9.3	8.7
Dependent student(b)	15.9	15.4	14.3	13.0	15.0	14.1
Non-dependent child(c)	14.4	12.6	10.8	8.6	13.1	11.1
Other family person	19.1	14.4	12.4	10.4	16.3	12.8
Non-family member	10.9	9.4	7.7	7.9	9.6	8.8
Lone person	11.0	9.0	6.6	7.7	9.3	8.5
Not living alone	10.8	9.9	8.9	8.2	10.0	9.2
Total	8.0	6.8	7.5	6.7	7.8	6.8
	PROPORTIONAL DISTRIBUTION OF UNEMPLOYED PERSONS (per cent)					
Family member	77.4	76.0	84.9	81.7	80.5	78.5
Husband or wife	39.0	36.7	37.4	36.3	38.3	36.6
With dependants	25.3	24.4	22.5	22.5	24.1	23.6
Without dependants	13.7	12.4	14.8	13.8	14.2	13.0
Lone parent	1.7	2.0	18.3	18.1	8.6	8.9
With dependants	* 1.0	1.6	16.3	15.9	7.4	7.8
Without dependants	* 0.7	* 0.5	2.0	2.1	1.3	1.2
Dependent student(b)	7.3	8.6	11.5	11.6	9.0	9.9
Non-dependent child(c)	24.9	24.7	15.0	13.1	20.8	19.7
Other family person	4.5	3.9	2.8	2.5	3.8	3.3
Non-family member	22.6	24.0	15.1	18.3	19.5	21.5
Lone person	12.1	11.7	6.7	8.8	9.8	10.5
Not living alone	10.5	12.2	8.4	9.5	9.6	11.1
Total	100.0	100.0	100.0	100.0	100.0	100.0

(a) Civilians who were residents of households where family status was determined. For further details see paragraphs 9 and 10 of the Explanatory Notes. (b) Excludes persons aged 20 attending school. Also excludes sons or daughters aged 15-24 who are classified as husbands, wives or lone parents. (c) Aged 15 and over.

**29. UNEMPLOYED PERSONS: RELATIONSHIP IN HOUSEHOLD(a), AND DURATION OF UNEMPLOYMENT,
JUNE 1999**

	Duration of unemployment (weeks)							Total	Average duration	Median duration
	Under 2	2 and under 4	4 and under 8	8 and under 13	13 and under 26	26 and under 52	52 and over			
	— '000 —							— weeks —		
MALES										
Family member	17.3	28.5	25.7	23.3	44.7	37.9	90.7	268.1	58.2	23
Husband	7.3	11.3	9.0	11.2	19.3	17.1	54.3	129.5	72.9	28
With dependants	4.6	7.0	6.2	7.4	12.6	13.0	35.1	85.9	73.8	26
Without dependants	* 2.6	4.4	* 2.8	* 3.9	6.7	* 4.1	19.2	43.7	71.1	31
Lone parent	* 0.0	* 0.7	* 0.8	* 0.7	* 0.6	* 1.6	* 2.7	7.1	* 50.4	* 30
With dependants	* 0.0	* 0.7	* 0.8	* 0.7	* 0.6	* 0.7	* 2.0	5.5	* 45.2	* 23
Without dependants	* 0.0	* 0.0	* 0.0	* 0.0	* 0.0	* 0.9	* 0.7	* 1.6	* 68.3	* 36
Dependent student(b)	6.4	5.8	4.6	* 2.2	6.0	* 3.1	* 2.3	30.5	16.2	4
Non-dependent child(c)	* 3.4	9.2	9.4	7.4	16.4	14.9	26.5	87.2	51.0	23
Other family person	* 0.3	* 1.5	* 1.9	* 1.8	* 2.3	* 1.2	4.9	13.8	61.7	* 22
Non-family member	4.4	9.7	10.3	5.5	12.3	13.6	28.7	84.5	61.1	26
Lone person	* 1.1	* 4.3	* 4.1	* 1.5	5.0	6.6	18.6	41.3	88.7	40
Not living alone	* 3.2	5.4	6.2	* 4.0	7.3	7.0	10.1	43.2	34.7	17
Total	21.7	38.2	36.0	28.8	57.0	51.4	119.4	352.6	58.9	24
FEMALES										
Family member	23.8	27.5	23.2	22.0	40.5	29.0	51.7	217.6	43.3	16
Wife	11.9	13.4	12.3	8.2	14.3	11.0	25.7	96.8	48.5	16
With dependants	6.3	8.4	7.9	6.0	11.1	5.8	14.6	60.1	44.3	15
Without dependants	5.5	5.1	4.4	* 2.2	* 3.1	5.2	11.2	36.7	55.3	17
Lone parent	* 3.1	4.7	4.5	4.4	10.2	7.7	13.6	48.2	53.2	22
With dependants	* 3.1	4.4	* 3.5	* 4.2	9.7	7.2	10.5	42.5	49.2	21
Without dependants	* 0.0	* 0.3	* 1.0	* 0.3	* 0.6	* 0.5	* 3.1	5.7	* 82.2	* 56
Dependent student(b)	5.6	5.5	* 3.5	4.8	4.6	4.7	* 2.4	31.0	14.7	8
Non-dependent child(c)	* 2.4	* 3.8	* 2.4	* 3.9	10.5	* 4.2	7.9	34.9	36.4	18
Other family person	* 0.8	* 0.2	* 0.5	* 0.7	* 0.9	* 1.5	* 2.1	6.7	* 64.7	* 26
Non-family member	* 2.9	4.4	6.3	* 3.2	9.8	8.4	13.7	48.7	54.4	21
Lone person	* 1.0	* 2.7	* 2.0	* 0.4	* 4.1	4.4	8.7	23.4	74.5	26
Not living alone	* 1.9	* 1.7	* 4.2	* 2.8	5.7	* 4.0	5.0	25.3	35.7	16
Total	26.7	32.0	29.5	25.2	50.3	37.3	65.4	266.4	45.3	17
PERSONS										
Family member	41.1	56.1	48.9	45.3	85.2	66.9	142.3	485.8	51.5	21
Husband or wife	19.1	24.8	21.3	19.5	33.6	28.1	80.0	226.3	62.5	22
With dependants	11.0	15.3	14.1	13.4	23.7	18.8	49.6	145.9	61.7	22
Without dependants	8.2	9.4	7.2	6.0	9.8	9.3	30.4	80.4	63.9	25
Lone parent	* 3.1	5.4	5.3	5.1	10.8	9.2	16.3	55.3	52.8	22
With dependants	* 3.1	5.1	* 4.3	4.9	10.3	7.9	12.5	48.0	48.8	21
Without dependants	* 0.0	* 0.3	* 1.0	* 0.3	* 0.6	* 1.4	* 3.8	7.3	* 79.2	* 52
Dependent student(b)	12.0	11.3	8.2	6.9	10.6	7.7	4.7	61.5	15.4	6
Non-dependent child(c)	5.8	12.9	11.8	11.2	26.9	19.1	34.4	122.1	46.8	21
Other family person	* 1.1	* 1.7	* 2.4	* 2.5	* 3.2	* 2.7	7.0	20.6	62.7	24
Non-family member	7.2	14.2	16.6	8.7	22.1	21.9	42.5	133.2	58.7	24
Lone person	* 2.1	7.1	6.2	* 1.9	9.2	11.0	27.3	64.7	83.6	30
Not living alone	5.1	7.1	10.4	6.8	13.0	11.0	15.1	68.5	35.1	16
Total	48.3	70.2	65.5	54.0	107.3	88.8	184.8	618.9	53.0	21

(a) Civilians who were residents of households where family status was determined. For further details see paragraphs 9 and 10 of the Explanatory Notes. (b) Excludes persons aged 20 attending school. Also excludes sons or daughters aged 15-24 who are classified as husbands, wives or lone parents. (c) Aged 15 and over.

EXPLANATORY NOTES

INTRODUCTION

1 In June 1999, details of the labour force status of family members and family composition were derived from the Labour Force Survey (LFS) component of the Monthly Population Survey.

2 For further information about the LFS, see *Labour Force, Australia* (Cat. no. 6203.0). This publication contains information about survey design, sample redesign, scope, coverage and population benchmarks relevant to the LFS, which also apply to supplementary surveys. It also contains definitions of demographic and labour force characteristics, and information about telephone interviewing which are relevant to both the LFS and supplementary surveys.

3 Tables 1 and 2 summarise the relationship in household of persons aged 15 and over. Tables 3 to 24 provide information about *couple, one parent* and *other families*—for example, the number of dependants present, the labour force status of husband, wife or family head. Tables 25–29 contain more detailed estimates of the labour force status of persons aged 15 and over according to their relationship in household, and classified by age, weekly hours worked and other variables.

THE POPULATION SURVEY

4 The population survey is based on a multi-stage area sample of private dwellings (currently about 30,000 houses, flats, etc.) and a list sample of non-private dwellings (hotels, motels, etc.) and covers about 0.5% of the usually resident civilian population aged 15 and over in Australia. The information is obtained from the occupants of selected dwellings by specially trained interviewers. The interviews for this survey were conducted during the two weeks beginning on Monday 7 June 1999. The information obtained relates to the week before the interview (i.e. the reference week).

SCOPE

5 The LFS includes all persons aged 15 and over except:

- members of the permanent defence forces;
- certain diplomatic personnel of overseas governments, customarily excluded from census and estimated populations;
- overseas residents in Australia; and
- members of non-Australian defence forces (and their dependants) stationed in Australia.

6 From July 1993, Jervis Bay Territory has been excluded from the scope of the survey. Before July 1993, it was included in estimates for the Australian Capital Territory.

COVERAGE

7 In the LFS, coverage rules are applied which aim to ensure that each person is associated with only one dwelling, and hence has only one chance of selection. The chance of a person being enumerated at two separate dwellings in the one survey is considered to be negligible.

COVERAGE *continued*

8 Persons who are away from their usual residence for six weeks or less at the time of interview are enumerated at their usual residence (relevant information may be obtained from other usual residents present at the time of the survey).

9 In order to derive estimates of families, the scope of the data is further restricted to usual residents of private dwellings. As a result, all persons living in non-private dwellings (including hotels, motels, hospitals and other institutions) and persons enumerated as visitors to private dwellings are excluded.

10 Also excluded are households where it was not possible to obtain information relating to all the usual residents. For example, households which include a member of the permanent defence forces, who is outside the scope of the population survey, are excluded. In addition, households which, at the time of the survey, have one or more of their usual residents away for more than six weeks, and households from which an incomplete or inadequate questionnaire was obtained for any usual resident are excluded. In June 1999, relationship in household and family type were determined for 95% of the usually resident civilian population aged 15 and over.

POPULATION BENCHMARKS

11 LFS estimates of persons employed, unemployed and not in the labour force are calculated in such a way as to add up to the independently estimated distribution of the usually resident civilian population aged 15 and over by age, sex and part of state. This procedure compensates for under-enumeration in the survey, and leads to more reliable estimates. Persons who, at the time of interview, are overseas for more than six weeks but for less than 12 months are included in the independent population statistics (benchmarks) and are thus provided for in the calculation of the estimates. The benchmarks are the latest available estimates at the time the LFS is conducted, but they usually differ from the official population estimates subsequently published in *Australian Demographic Statistics* (Cat. no. 3101.0) because they are projected estimates of population changes.

REVISION OF POPULATION BENCHMARKS

12 Survey estimates are not revised for the usually small amendments of population benchmarks arising from new data on deaths and overseas and internal migration. Revisions are made, however, after each Census of Population and Housing, and when population estimation bases are reviewed. These revisions affect original, seasonally adjusted and trend estimates. The last such revision was made in February 1999 to take account of the results of the 1996 Census of Population and Housing, which affected all the monthly estimates from January 1995 to January 1999. Consequently, person level estimates for June 1998 in tables 1, 2 and 28 will differ from those published in the previous issue of this publication.

REVISION OF POPULATION
BENCHMARKS *continued*

13 Population benchmarks used in the estimation of LFS data are compiled according to place of usual residence. For details of the conceptual basis of population estimates, see *Information Paper: Population Estimates: An Outline of the New Conceptual Basis of ABS Population Estimates* (Cat. no. 3216.0). Prior to October 1982, labour force estimates were based on a combination of place of enumeration and place of usual residence.

CHANGES IN FAMILIES
CLASSIFICATIONS

14 The *Relationship in household* and *Family type* classifications were introduced for the Labour Force Survey in the March 1994 issue of *Labour Force, Australia* (Cat. no. 6203.0). Most categories in the two classifications remain comparable with categories in the previous classifications. The cases in which there are differences between the two are discussed in the following paragraphs:

- *Relationship in household*. This classification was previously referred to as *Family status*.
- *Lone parents* (previously referred to as *Sole parents*) now includes parents with non-dependent children (provided those children are without a spouse or children of their own). These *Lone parents without dependants* are shown separately in table 1.
- *Dependent students* (previously *Full-time students aged 15–24*) now comprise sons or daughters (of a couple or a lone parent) aged 15–19 attending school or aged 15–24 attending a tertiary educational institution full time. Other related full-time students, who were also previously classified as *Full-time students aged 15–24* are now included in *Other family persons*.
- *Other family persons* now comprises the previous groups *Other family head*, excluding those now counted as *Lone parents*, other related full-time students classified as *Full-time students aged 15–24* and *Other relative of married couple or family head*.

15 *Family type*. This classification was previously referred to as *Type of family*. There are three types of families in the new classification, as follows:

- *Couple families* is the term used to describe families previously referred to as *Married-couple families*. Apart from the name change, the new category is otherwise exactly comparable with the old category.
- *One parent families* now includes those families in which there is a lone parent with only non-dependent children present. Such families were previously included in *Other families*.
- *Other families* now excludes those families in which there is a lone parent with only non-dependent children present (see above).

16 Estimates of families published for June 1999 are based on population estimates derived from the results of the 1996 Census of Population and Housing (adjusted for under-enumeration). Family estimates from 1994 to 1998 were based on 1991 Census results, with those from 1989 to 1993 based on 1986 Census results.

17 Commencing with the June 1989 issue, the category other families was split into one parent families and other families. Therefore these estimates are not strictly comparable with estimates in issues prior to June 1989. However, in June 1988, 98% of other families with dependants were one parent families.

18 Estimates of the number of husbands and wives with dependants in June 1988, as published in selected tables in the June 1989 issue of this publication, are slightly higher than those published in the June 1988 issue. The estimates of the number of husbands and wives without dependants are correspondingly lower. This is due to a small error made at the computer processing stage of the production of family status estimates in the June 1988 issue of this publication.

19 For the July 1982 and previous surveys, office imputation was undertaken to determine the family status of those persons enumerated in private dwellings where family information could not be obtained for all usual residents, and for those persons enumerated in non-private dwellings or as visitors to private dwellings where family information could not be obtained for each member of the family. Due to the increased demand for family data on a consistent and more regular basis, it was decided to change the processing methodology to eliminate office imputation and rely solely on the reported information. Consequently the scope of the July 1983 and subsequent surveys was narrowed to exclude those respondents for whom it is known that complete family information is difficult to collect (see paragraphs 9 and 10).

20 Surveys from July 1983 onwards are thus not strictly comparable with previous surveys since the persons excluded may have differing family and labour force characteristics to those persons included in the survey. Because of these exclusions the total number of persons with particular family characteristics will also differ between surveys conducted prior to July 1983 and those conducted from July 1983 onwards. Table 1 shows the number of persons excluded from the survey.

21 In the July 1985 and previous surveys, dependants (then described as dependent children) comprised all family members under 15 years of age and all family members aged 15–20 who were full-time students, except those classified as husbands, wives or other family heads. The current definition is given in the Glossary. Tables 24, 25 and 31 of the June 1986 issue of this publication provide an indication of the differences between the student component of the old and new definitions.

COMPARABILITY OF SERIES
continued

22 Since the July 1985 survey was conducted, the definition of employed persons has been extended to include persons who worked without pay between 1 and 14 hours per week in a family business or on a farm (i.e. contributing family workers). This new definition aligns the Australian labour force concepts with a set of changed international definitions adopted by the International Labour Organisation at the 13th Conference of Labour Statisticians in October 1982.

23 Previously, such persons who worked 1–14 hours or who had such a job but were not at work were defined as either unemployed or not in the labour force, depending on whether they were actively looking and available for work. The changes in definition resulted in original (unadjusted) estimates of employment for March 1986 increasing by 34,900 and unemployment decreasing by 5,800.

24 Estimates of the number of families in June 1986 and subsequent years have been calculated differently to those for earlier years. This is due to the adoption of a new weighting procedure where the family weight is determined using an average of all family members responding to the LFS. Previously, the family weight used to publish estimates of the number of families was determined by nomination of a proxy 'head of household' as representative of the family. For these reasons, estimates for the June 1986 and subsequent surveys are not strictly comparable with those for earlier surveys.

25 Although comparisons may generally be made, users should be aware of the above differences.

RELIABILITY OF THE
ESTIMATES

26 Since the estimates in this publication are based on information obtained from occupants of a sample of dwellings, they may differ from the figures that would have been produced if the information had been obtained from occupants of all dwellings. More information is given in the Technical Notes.

NEXT SURVEY

27 The ABS plans to release the next issue of this publication based on information collected in the June 2000 LFS.

RELATED PUBLICATIONS

28 Other ABS publications which may be of interest include:

Australian Social Trends (Cat. no. 4102.0)—issued annually

Career Experience, Australia, November 1998 (Cat. no. 6254.0)

Child Care, Australia, March 1996 (Cat. no. 4402.0)

Children, Australia: A Social Report, 1999 (Cat. no. 4119.0)

Family Characteristics, Australia, April 1997 (Cat. no. 4442.0)

Information Paper: Measuring Employment and Unemployment (Cat. no. 6279.0)

RELATED PUBLICATIONS
continued

Information Paper: Questionnaires Used in the Labour Force Survey (Cat. no. 6232.0)

Labour Force, Australia (Cat. no. 6203.0)—issued monthly

29 Current publications produced by the ABS are listed in the *Catalogue of Publications and Products* (Cat. no. 1101.0). The ABS also issues, on Tuesdays and Fridays, a *Release Advice* (Cat. no. 1105.0) which lists publications to be released in the following few days. The Catalogue and Release Advices are available from any ABS office.

TECHNICAL NOTES

ESTIMATION PROCEDURE

Estimates of families and persons are derived from the population survey by use of a ratio estimation procedure, which ensures that estimates of persons conform to an independently estimated distribution of the population by age and sex, rather than to the age and sex distribution within the sample itself.

RELIABILITY OF THE ESTIMATES

Two types of error are possible in an estimate based on a sample survey: sampling error and non-sampling error. The *sampling error* is a measure of the variability that occurs by chance because a sample, rather than the entire population, is surveyed. Since the estimates in this publication are based on information obtained from occupants of a sample of dwellings, they, and the movements derived from them, are subject to sampling variability; that is, they may differ from the estimates that would have been produced if all dwellings had been included in the survey. One measure of the likely difference is given by the *standard error*, which indicates the extent to which an estimate might have varied by chance because only a sample of dwellings was included in the survey. There are about two chances in three that a sample estimate will differ by less than one standard error from the estimate that would have been obtained if all dwellings had been included in the survey, and about 19 chances in 20 that the difference will be less than two standard errors. Another measure of sampling variability is the *relative standard error* (RSE) which is obtained by expressing the standard error as a percentage of the estimate to which it refers. The RSE is a useful measure in that it provides an immediate indication of the percentage errors likely to have occurred due to sampling, and thus avoids the need to refer also to the size of the estimate.

Space does not allow for the separate presentation of the standard errors of all estimates in this publication. Standard errors of estimates should be determined by using table T1, if necessary in conjunction with the factors given on page 39.

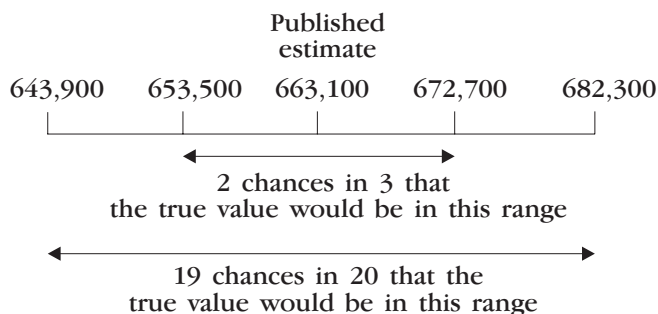
The size of the standard error increases with the level of the estimate, so that the larger the estimate the larger is the standard error. However, it should be noted that the larger the sample estimate the smaller will be the standard error in percentage terms. Thus, larger sample estimates will be relatively more reliable than smaller estimates.

As the standard errors in table T1 show, *the smaller the estimate the higher is the RSE*. Very small estimates are thus subject to such high RSEs (relative to the size of the estimate) as to detract seriously from their value for most reasonable uses. In the tables in this publication, only estimates with RSEs of 25% or less, and percentages based on such estimates, are considered sufficiently reliable for most purposes. However, estimates and percentages with larger RSEs have been included and are preceded by an asterisk (e.g. *3.4) to indicate they are subject to high standard errors and should be used with caution. The derivation of RSEs for some estimates is discussed further.

The annual movement in the level of an estimate is also subject to sampling variability. The standard error of the movement depends on the levels of the estimates from which the movement is obtained rather than the size of the movement. Standard errors of all annual movements can be obtained by multiplying the figures in table T1 by 1.3. When using table T1 to calculate standard errors of annual movements, refer to the larger of the two estimates from which the movement is derived.

An example of the calculation and use of standard errors is as follows:

From table T1 it will be seen that the estimate of 663,100 one parent families with a female parent in June 1999 has a standard error of about 9,600. Therefore, there are about two chances in three that the actual number of one parent families was within the range 653,500 to 672,700 and about 19 chances in 20 that it was within the range 643,900 to 682,300.



The RSEs of estimates of *average family size*, *average hours worked*, *average duration of unemployment* and *median duration of unemployment* are obtained by first finding the RSE of the estimate of the total number of persons or families contributing to the estimate (see table T1) and then multiplying the figure so obtained by the following relevant factors:

- average family size: 0.3
- average hours worked: 0.9
- average duration of unemployment: 1.5
- median duration of unemployment: 1.7

The levels at which these and other labour force estimates have a RSE of 25% are shown in table T2.

An example of the calculation of standard errors by the use of these factors follows.

In June 1999 the estimate of median duration of unemployment for husbands of couple families was 29 weeks and the number of families with the husband unemployed was estimated as 126,300. From table T1 it can be calculated that this estimate has a standard error of about 5,150 and therefore a RSE of about 4.1%. The RSE of the estimate of median duration of unemployment is calculated by multiplying this figure by the appropriate factor shown in the previous paragraph (in this case 1.7): $4.1 \times 1.7 = 7.0\%$. The standard error of this estimate of

median duration of unemployment is therefore 7.0% of 29, i.e. about 2. Therefore there are about two chances in three that the median duration of unemployment for unemployed husbands was within the range 27 to 31 weeks and about 19 chances in 20 that it was within the range 25 to 33 weeks.

Proportions and percentages (for example, participation rates) formed from the ratio of two estimates are also subject to sampling error. The size of the error depends on the accuracy of both the numerator and denominator. The formula for the RSE of a proportion or percentage is given below:

$$\text{RSE}(x/y) = \sqrt{[\text{RSE}(x)]^2 + [\text{RSE}(y)]^2}$$

Standard errors contained in table T1 are designed to provide an average standard error applicable for all monthly LFS estimates. Analysis of the standard errors applicable to particular survey estimates has shown that the standard errors of estimates of employment are generally 5% lower than those shown in table T1, while standard errors of estimates of unemployment and not in the labour force are both approximately 4% higher than those shown in table T1. Standard errors of estimates of numbers of families are approximately the same as those for numbers of persons.

The imprecision due to sampling variability, which is measured by the standard error, should not be confused with inaccuracies that may occur because of imperfections in reporting by respondents, errors made in collection such as in recording and coding data, and errors made in processing the data. Inaccuracies of this kind are referred to as the *non-sampling error*, and they may occur in any enumeration, whether it be a full count or a sample. Every effort is made to reduce the non-sampling error to a minimum by careful design of questionnaires, intensive training and supervision of interviewers and efficient operating procedures.

T1 STANDARD ERRORS OF ESTIMATES

Size of estimate (no. of families or persons)	NSW	Vic.	Qld	SA	WA	Tas.	NT	ACT	Aust.	RSE (%)
	no.	no.	no.	no.	no.	no.	no.	no.	no.	
100	100	100	130
200	210	210	140	130	160	140	70.0
300	220	230	310	250	260	160	150	180	180	60.0
500	320	320	390	310	330	200	190	210	270	54.0
700	400	390	460	360	380	230	220	240	340	48.6
1 000	520	490	540	410	450	270	250	270	440	44.0
1 500	670	620	650	490	540	320	290	310	570	38.0
2 000	800	740	740	550	610	360	330	340	700	35.0
2 500	900	850	800	600	650	400	350	350	800	32.0
3 000	1 000	900	900	650	700	400	400	400	900	30.0
3 500	1 100	1 000	950	700	750	450	400	400	950	27.1
4 000	1 200	1 050	1 000	750	800	450	450	450	1 050	26.3
5 000	1 350	1 200	1 100	800	900	500	450	500	1 200	24.0
7 000	1 600	1 400	1 300	900	1 050	600	550	550	1 450	20.7
10 000	1 900	1 650	1 500	1 050	1 200	700	600	600	1 700	17.0
15 000	2 300	1 950	1 800	1 250	1 400	800	700	750	2 100	14.0
20 000	2 600	2 200	2 050	1 400	1 550	900	800	800	2 450	12.3
30 000	3 100	2 600	2 400	1 650	1 850	1 050	900	950	2 950	9.8
40 000	3 450	2 900	2 750	1 850	2 050	1 150	1 000	1 100	3 300	8.3
50 000	3 700	3 100	3 000	2 050	2 200	1 250	1 100	1 200	3 650	7.3
100 000	4 600	3 900	4 000	2 700	2 850	1 600	1 400	1 650	4 750	4.8
150 000	5 250	4 550	4 700	3 200	3 300	1 900	1 600	1 950	5 500	3.7
200 000	5 750	5 100	5 300	3 550	3 650	2 100	1 800	2 250	6 150	3.1
300 000	6 700	6 050	6 250	4 200	4 150	2 450	..	2 700	7 150	2.4
500 000	8 350	7 550	7 650	5 100	4 950	2 900	8 700	1.7
1 000 000	11 650	10 600	10 000	6 700	6 150	11 350	1.1
2 000 000	17 150	15 400	13 050	8 750	7 600	15 000	0.8
5 000 000	30 750	26 500	18 400	23 000	0.5
10 000 000	40 350	0.4

T2 LEVELS AT WHICH LABOUR FORCE ESTIMATES HAVE A RELATIVE STANDARD ERROR OF 25%(a)

	NSW	Vic.	Qld	SA	WA	Tas.	NT	ACT	Aust.
Estimates(b) of									
Average family size	150	210	440	300	320	140	130	190	60
Average hours worked	4 600	3 800	3 700	2 000	2 400	800	700	1 000	3 500
Average duration of unemployment	10 400	9 600	7 300	4 100	5 000	1 800	1 100	1 900	10 400
Median duration of unemployment	16 800	12 700	10 800	6 000	7 200	2 800	2 500	2 600	14 300
All other estimates	5 900	4 500	4 100	2 400	2 800	1 100	1 000	1 100	4 400

(a) See Technical Notes, page 38. (b) The entries in this table refer to the number of families or persons contributing to the estimate.

GLOSSARY

Actively looking for work	Includes writing, telephoning or applying in person to an employer for work; answering an advertisement for a job; checking factory noticeboards or the touchscreens at Centrelink offices; being registered with Centrelink as a jobseeker; checking or registering with any other employment agency; advertising or tendering for work; and contacting friends or relatives.
Aggregate hours worked	The total number of hours a group of employed persons has actually worked during the reference week, not necessarily hours paid for.
Average duration of unemployment	For any group of unemployed persons, the aggregate duration of unemployment divided by the number of persons in the group.
Average family size	For any group of families, the total number of family members divided by the number of families in the group.
Average hours worked	Aggregate hours worked by a group divided by the number of persons in that group.
Couple families	Families in which there are two married persons and these persons are husband and wife. See Marital status.
Dependants	All family members under 15 years of age; all family members aged 15–19 attending school or aged 15–24 attending a tertiary educational institution full time (except those classified as husbands, wives or lone parents).
Dependent student	In couple or one parent families, sons or daughters aged 15–19 attending school or aged 15–24 attending a tertiary educational institution full time (except those classified as husbands, wives or lone parents).
Duration of unemployment	The period from the time a person began looking for work or was stood down, to the end of the reference week. Thus the survey measures current (and continuing) periods of unemployment rather than completed spells. For persons who may have begun looking for work while still employed, the duration of unemployment is defined as the period from the time the person last worked full time for two weeks or more to the end of the reference week.

Employed Persons aged 15 and over who, during the reference week:

- worked for one hour or more for pay, profit, commission or payment in kind in a job or business, or on a farm (comprising employees, employers and own account workers); or
- worked for one hour or more without pay in a family business or on a farm (i.e. contributing family workers); or
- were employees who had a job but were not at work and were: on paid leave; on leave without pay for less than four weeks up to the end of the reference week; stood down without pay because of bad weather or plant breakdown at their place of employment for less than four weeks up to the end of the reference week; on strike or locked out; on workers' compensation and expected to be returning to their job; or receiving wages or salary while undertaking full-time study; or
- were employers, self-employed persons or unpaid family helpers who had a job, business or farm, but were not at work.

Family Two or more related persons (*relationship* includes relationships by blood, marriage or adoption) usually resident in the same household at the time of the survey. A family comprises a married couple or a family head as defined, together with any persons having any of the following relationships to them:

- sons or daughters of any age, if not married and with no children of their own present;
- other relatives if not accompanied by a spouse, sons or daughters, or parents of their own; or
- any children under 15 years of age who do not have a parent present.

Family head Any person without a spouse present:

- with a son or daughter aged under 15 present; or
- without a son or daughter aged under 15 present, but with a son or daughter aged 15 or over present (provided that the son or daughter has no spouse, son or daughter of his/her own present); or

Where a family has no person falling into either of these categories, the family head is generally defined to be the eldest person in the family.

No family head is determined for a couple family.

Full-time workers Employed persons who usually worked 35 hours or more a week (in all jobs) and others who, although usually working less than 35 hours a week, worked 35 hours or more during the reference week.

Household	A group of one or more persons in a private dwelling who consider themselves to be separate from other persons (if any) in the dwelling, and who make regular provision to take meals separately from other persons, i.e. at different times or in different rooms. Lodgers who receive accommodation but not meals are treated as separate households. Boarders who receive both accommodation and meals are not treated as separate households. A household may consist of any number of families and non-family members.
Husband	See Marital status.
Labour force	For any group, persons who were employed or unemployed, as defined.
Labour force status	A classification of the civilian population aged 15 and over into employed, unemployed or not in the labour force, as defined. The definitions conform closely to the international standard definitions adopted by the International Conferences of Labour Statisticians.
Lone parent	The head of a one parent family.
Lone person	A person who is the sole member of a household.
Main English-speaking countries	The United Kingdom, Ireland, South Africa, Canada, the United States of America and New Zealand.
Marital status	Persons are classified as married (husband and wife) if they are reported as being married (including de facto) and their spouse was a usual resident of the household at the time of the survey. The not-married category comprises persons who have never married, or are separated, widowed or divorced, as well as those who, although reported as being married, did not have a spouse who usually lived in the household.
Median duration of unemployment	The duration which divides unemployed persons into two equal groups, one comprising persons whose duration of unemployment is above the median and the other, persons whose duration is below it.
Non-dependent child	In couple or one parent families, sons or daughters aged 15 and over, other than those classified as dependent students, husbands, wives or sole parents.
Non-family member	A person who is not related to any other member of the household in which they are living.
Not in the labour force	Persons who were not in the categories employed or unemployed, as defined. They include persons who were keeping house (unpaid), retired, voluntarily inactive, permanently unable to work, persons in institutions (hospitals, gaols, sanatoriums, etc.), trainee teachers, members of contemplative religious orders, and persons whose only activity during the reference week was jury service or unpaid voluntary work for a charitable organisation.

One parent families	Families in which there is a family head together with at least one son or daughter of his/her own.
Other countries	All countries outside Australia other than the main English-speaking countries defined previously.
Other families	Families which are not couple families or one parent families, as defined. They include families in which there is no parent, for example, a family head living with a brother or sister.
Participation rate	For any group, the labour force expressed as a percentage of the civilian population aged 15 and over in the same group.
Part-time workers	Employed persons who usually worked less than 35 hours a week and who did so during the reference week.
Unemployed	<p>Persons aged 15 and over who were not employed during the reference week, and:</p> <ul style="list-style-type: none"> ▪ had actively looked for full-time or part-time work at any time in the four weeks up to the end of the reference week and: ▪ were available for work in the reference week, or would have been available except for temporary illness (i.e. lasting for less than four weeks to the end of the reference week); or ▪ were waiting to start a new job within four weeks from the end of the reference week and would have started in the reference week if the job had been available then; or ▪ were waiting to be called back to a full-time or part-time job from which they had been stood down without pay for less than four weeks up to the end of the reference week (including the whole of the reference week) for reasons other than bad weather or plant breakdown.
Unemployed looking for full-time work	Unemployed persons who actively looked for full-time work or were to resume a full-time job, from which they had been stood down.
Unemployment rate	For any group, the number of unemployed persons expressed as a percentage of the labour force in the same group.
Wife	See Marital status.

SELF-HELP ACCESS TO STATISTICS

<i>CPI INFOLINE</i>	For current and historical Consumer Price Index data, call 1902 981 074 (call cost 75c per minute).
<i>DIAL-A-STATISTIC</i>	For the latest figures for National Accounts, Balance of Payments, Labour Force, Average Weekly Earnings, Estimated Resident Population and the Consumer Price Index call 1900 986 400 (call cost 75c per minute).
<i>INTERNET</i>	www.abs.gov.au
<i>LIBRARY</i>	A range of ABS publications is available from public and tertiary libraries Australia-wide. Contact your nearest library to determine whether it has the ABS statistics you require.

WHY NOT SUBSCRIBE?

<i>PHONE</i>	+61 1300 366 323
<i>FAX</i>	+61 03 9615 7848

CONSULTANCY SERVICES

ABS offers consultancy services on a user pays basis to help you access published and unpublished data. Data that is already published and can be provided within 5 minutes is free of charge. Statistical methodological services are also available. Please contact:

<i>INQUIRIES</i>	<i>City</i>	<i>By phone</i>	<i>By fax</i>
	Canberra	02 6252 6627	02 6207 0282
	Sydney	02 9268 4611	02 9268 4668
	Melbourne	03 9615 7755	03 9615 7798
	Brisbane	07 3222 6351	07 3222 6283
	Perth	08 9360 5140	08 9360 5955
	Adelaide	08 8237 7400	08 8237 7566
	Hobart	03 6222 5800	03 6222 5995
	Darwin	08 8943 2111	08 8981 1218

POST Client Services, ABS, PO Box 10, Belconnen ACT 2616

EMAIL client.services@abs.gov.au



2622400006994
ISSN 1031-0401

RRP \$19.00